

TOURIST ACCOMMODATION AUSTRALIA

EMBARGO: 11.30AM (CANBERRA TIME) MON 10 JAN 2005

C O N T E N T S

	<i>page</i>
Notes	2
Summary of findings	3
List of tables	7

ADDITIONAL INFORMATION

Explanatory Notes	41
Glossary	44

I N Q U I R I E S

- For further information about these and related statistics, contact the National Information and Referral Service on 1300 135 070 or on .

NOTES

FORTHCOMING ISSUES

<i>ISSUE (Quarter)</i>	<i>RELEASE DATE</i>
December 2004	30 March 2005
March 2005	30 June 2005



ABOUT THIS PUBLICATION

This publication presents results from the quarterly Survey of Tourist Accommodation (STA). The scope of the STA includes hotels, motels and guest houses and serviced apartments with 15 or more rooms.

For 2004 the STA includes the following categories of establishments which provide predominantly short-term non-residential accommodation to the general public:

- hotels and resorts with facilities and 15 or more rooms
- motels, private hotels and guest houses with facilities and 15 or more rooms
- serviced apartments with 15 or more units.

CHANGES IN THIS ISSUE

Some changes have been made to the Glossary and data item labels in this publication as a result of implementing recommendations from an internal business process review of the STA. These recommendations serve to ensure the consistency of usage of data item descriptions between published output and the Glossary.



ABBREVIATIONS

'000	thousand
\$'000	thousand dollars
ABS	Australian Bureau of Statistics
ACT	Australian Capital Territory
ASGC	Australian Standard Geographical Classification
cat. no.	Catalogue number
GST	Goods and Services Tax
no.	number
NSW	New South Wales
NT	Northern Territory
Qld	Queensland
SA	South Australia
SLA	statistical local area
STA	Survey of Tourist Accommodation
Tas.	Tasmania
Vic.	Victoria
WA	Western Australia

Susan Linacre
Acting Australian Statistician

SUMMARY OF FINDINGS

SEASONALLY ADJUSTED AND TREND

SEASONALLY ADJUSTED AND TREND KEY FIGURES, Licensed hotels, motels and guest houses and serviced apartments—Australia

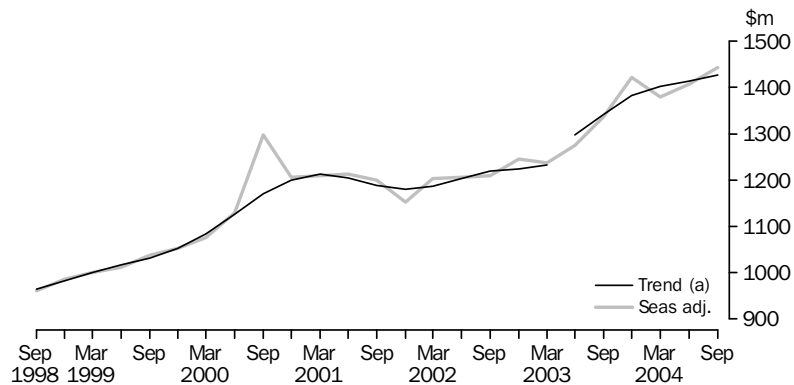
	Sep Qtr 2003	Jun Qtr 2004	Sep Qtr 2004
Seasonally Adjusted			
Room occupancy rate (%)	60.8	61.8	62.5
Takings from accommodation ('000)	1 337 660	1 407 031	1 443 354
Trend			
Room occupancy rate (%)	60.5	61.8	62.1
Takings from accommodation ('000)	1 342 562	1 413 253	1 426 544

Accommodation takings

The trend estimate of the total accommodation takings for licensed hotels with facilities, motels and guest houses and serviced apartments combined increased by 6.3% to \$1,426.5 million in September quarter 2004 compared with September quarter 2003.

The seasonally adjusted estimate of the total accommodation takings rose by 7.9% to \$1,443.4 million from September quarter 2003 to September quarter 2004.

ACCOMMODATION TAKINGS (a), Seasonally adjusted and Trend—Australia



(a) Break in time series between the March and June quarters 2003. See Explanatory Notes.

Room occupancy rate

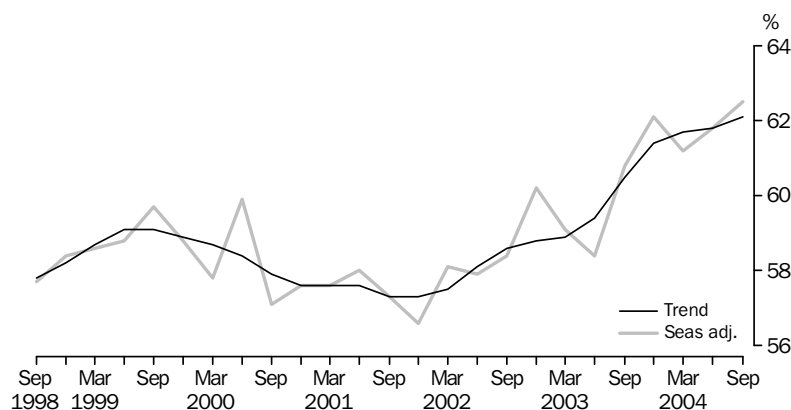
The trend estimate of the room occupancy rate for licensed hotels with facilities, motels and guest houses and serviced apartments combined rose by 1.6 percentage points from 60.5% in September quarter 2003 to 62.1% in September quarter 2004.

The seasonally adjusted estimate of the room occupancy rate increased by 1.7 percentage points to 62.5% from September quarter 2003 to September quarter 2004.

SUMMARY OF FINDINGS *continued*

Room occupancy rate
continued

ROOM OCCUPANCY RATE(a), Seasonally adjusted and
Trend—Australia



(a) Room occupancy rates are not subject to a break in series.

ORIGINAL

ORIGINAL KEY FIGURES, Australia

	Sep Qtr 2003	Jun Qtr 2004	Sep Qtr 2004
Licensed hotels with facilities			
Rooms (no.)	77 914	78 796	78 777
Room nights occupied ('000)	4 809.5	4 506.3	5 021.7
Room occupancy rate (%)	67.1	63.2	69.3
Takings from accommodation (\$'000)	664 512	627 765	720 863
Average takings per room night occupied (\$)	138.2	139.3	143.5
Motels and guest houses			
Rooms (no.)	85 198	84 532	84 452
Room nights occupied ('000)	4 356.4	4 022.9	4 397.4
Room occupancy rate (%)	55.6	52.6	56.7
Takings from accommodation (\$'000)	399 637	368 779	418 253
Average takings per room night occupied (\$)	91.7	91.7	95.1
Serviced apartments			
Rooms (no.)	39 921	41 104	41 601
Room nights occupied ('000)	2 492.2	2 278.5	2 668.8
Room occupancy rate (%)	68.3	61.2	69.9
Takings from accommodation (\$'000)	309 339	280 920	346 601
Average takings per room night occupied (\$)	124.1	123.3	129.9
Total			
Rooms (no.)	203 033	204 432	204 830
Room nights occupied ('000)	11 658.1	10 807.7	12 087.9
Room occupancy rate (%)	62.5	58.4	64.2
Takings from accommodation (\$'000)	1 373 488	1 277 463	1 485 716
Average takings per room night occupied (\$)	117.8	118.2	122.9

Accommodation takings

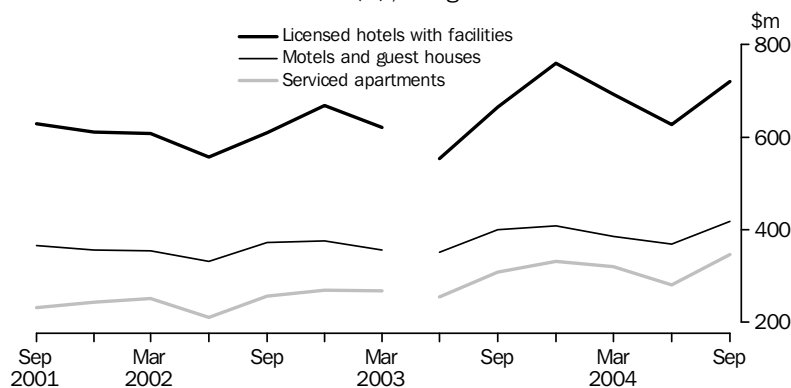
In September quarter 2004, accommodation takings for licensed hotels with facilities, motels and guest houses and serviced apartments combined were \$1,485.7 million. This was an increase of 8.2% (\$112.2 million) from September quarter 2003. The average takings per room night occupied for licensed hotels with facilities, motels and guest houses and serviced apartments combined was \$122.90.

Licensed hotels with facilities were the highest contributor to accommodation takings with \$720.9 million (48.5%). Average takings per room night occupied in September quarter 2004 were highest for licensed hotels with facilities at \$143.50.

SUMMARY OF FINDINGS *continued*

Accommodation takings *continued*

ACCOMMODATION TAKINGS (a), Original—Australia



(a) Break in time series between the March and June quarters 2003. See Explanatory Notes.

The contributions of accommodation takings in September quarter 2004 for licensed hotels with facilities, motels and guest houses and serviced apartments combined were highest in New South Wales (32.7%) and Queensland (29.6%) and lowest in Tasmania (1.7%).

Room nights occupied

Total room nights occupied were 12.1 million in September quarter 2004 for licensed hotels with facilities, motels and guest houses and serviced apartments combined. Room nights occupied increased by 3.7% (0.4 million) from September quarter 2003 to September quarter 2004.

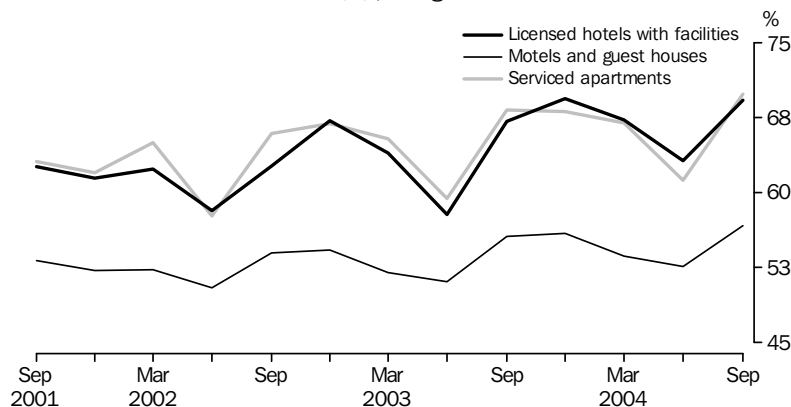
Licensed hotels with facilities represented 5.0 million (41.5%) of the total room nights occupied, while motels and guest houses represented 4.4 million (36.4%) and serviced apartments represented 2.7 million (22.1%).

Room occupancy rate

The room occupancy rate for licensed hotels with facilities, motels and guest houses and serviced apartments combined increased 1.7 percentage points to 64.2% in September quarter 2004 compared with September quarter 2003.

The Northern Territory recorded the highest room occupancy rate for licensed hotels with facilities, motels and guest houses and serviced apartments combined with 75.6%. This was followed by Queensland (72.6%) and the Australian Capital Territory (70.5%).

ROOM OCCUPANCY RATES (a), Original—Australia



(a) Room occupancy rates are not subject to a break in series.

LIST OF TABLES

page

HOTELS, MOTELS AND GUEST HOUSES AND SERVICED APARTMENTS

ORIGINAL, SEASONALLY ADJUSTED AND TREND

1 Australia	9
--------------------	---

SUMMARY

2 Australia	10
--------------------	----

STAR GRADING

3 Australia	12
4 New South Wales	14
5 Victoria	16
6 Queensland	18
7 South Australia	20
8 Western Australia	22
9 Tasmania	24
10 Northern Territory	26
11 Australian Capital Territory	28

TOURISM REGIONS

12 New South Wales	30
13 Victoria	32
14 Queensland	34
15 South Australia	36
16 Western Australia	38
17 Tasmania	39
18 Northern Territory and Australian Capital Territory	40

	ORIGINAL		SEASONALLY ADJUSTED		TREND	
	Room occupancy rate	Takings from accommodation(a)	Room occupancy rate	Takings from accommodation(a)	Room occupancy rate	Takings from accommodation(a)
	%	'000	%	'000	%	'000
2001						
March Quarter	57.7	1 218 107	57.6	1 209 137	57.6	1 213 313
June Quarter	55.2	1 111 337	58.0	1 212 734	57.6	1 205 070
September Quarter	58.7	1 226 522	57.3	1 199 043	57.3	1 187 859
December Quarter	57.6	1 209 554	56.6	1 151 486	57.3	1 180 575
2002						
March Quarter	58.6	1 213 991	58.1	1 203 503	57.5	1 187 068
June Quarter	54.8	1 100 074	57.9	1 206 738	58.1	1 203 472
September Quarter	59.6	1 236 869	58.4	1 208 886	58.6	1 219 019
December Quarter	61.7	1 314 053	60.2	1 245 202	58.8	1 224 835
2003						
March Quarter	59.1	1 244 695	59.1	1 237 778	58.9	1 232 393
June Quarter	55.3	1 159 500	58.4	1 275 108	59.4	1 297 545
September Quarter	62.5	1 373 488	60.8	1 337 660	60.5	1 342 562
December Quarter	63.5	1 499 344	62.1	1 422 046	61.4	1 382 399
2004						
March Quarter	61.6	1 398 573	61.2	1 378 658	61.7	1 401 633
June Quarter	58.4	1 277 463	61.8	1 407 031	61.8	1 413 253
September Quarter	64.2	1 485 716	62.5	1 443 354	62.1	1 426 544

(a) Break in time series between the March and June quarters 2003. See Explanatory Notes.

SUMMARY OF HOTELS, MOTELS AND SERVICED APARTMENTS, Australia

<i>Period</i>	<i>Establishments(a)</i> no.	<i>Rooms(a)</i> no.	<i>Bed spaces(a)</i> no.	<i>Persons employed(a)</i> no.	<i>Room nights occupied(a)</i> '000	<i>Room occupancy rate</i> %
.....						
LICENSED HOTELS WITH FACILITIES						
2003						
June Quarter	799	78 089	204 484	69 155	4 109	57.8
September Quarter	794	77 914	203 346	70 105	4 810	67.1
December Quarter	796	78 720	202 962	70 046	4 996	69.4
2004						
March Quarter	791	78 474	202 354	69 472	4 798	67.3
June Quarter	793	78 796	204 856	69 629	4 506	63.2
September Quarter	789	78 777	205 297	70 088	5 022	69.3
Year ended September 2003	18 147	64.0
Year ended September 2004	19 323	67.3
.....						
MOTELS AND GUEST HOUSES WITH FACILITIES						
2003						
June Quarter	2 424	85 148	247 803	29 627	3 955	51.1
September Quarter	2 416	85 198	247 709	30 074	4 356	55.6
December Quarter	2 415	85 390	246 107	29 473	4 380	55.9
2004						
March Quarter	2 404	84 903	244 265	29 432	4 137	53.7
June Quarter	2 404	84 532	244 770	29 069	4 023	52.6
September Quarter	2 396	84 452	244 387	29 244	4 397	56.7
Year ended September 2003	16 407	53.3
Year ended September 2004	16 938	54.7
.....						
SERVICED APARTMENTS						
2003						
June Quarter	772	39 182	128 060	12 966	2 120	59.4
September Quarter	775	39 921	129 429	13 268	2 492	68.3
December Quarter	781	40 351	131 183	13 489	2 525	68.1
2004						
March Quarter	786	40 734	132 240	13 371	2 481	67.0
June Quarter	795	41 104	133 268	13 808	2 278	61.2
September Quarter	800	41 601	134 186	13 714	2 669	69.9
Year ended September 2003	8 907	65.0
Year ended September 2004	9 953	66.6
.....						
HOTELS, MOTELS AND SERVICED APARTMENTS						
2003						
June Quarter	3 995	202 419	580 347	111 748	10 184	55.3
September Quarter	3 985	203 033	580 484	113 447	11 658	62.5
December Quarter	3 992	204 461	580 252	113 008	11 901	63.5
2004						
March Quarter	3 981	204 111	578 859	112 275	11 417	61.6
June Quarter	3 992	204 432	582 894	112 506	10 808	58.4
September Quarter	3 985	204 830	583 870	113 046	12 088	64.2
Year ended September 2003	43 461	59.7
Year ended September 2004	46 213	61.9

.. not applicable

(a) Break in time series between the March and June quarters 2003.
See Explanatory Notes.

Period	Guest nights	Bed	Guest	Average	Takings from
	occupied(a)	occupancy rate	arrivals(a)	length of stay	accommodation(a)
	'000	%	'000	days	\$'000
.....					
LICENSED HOTELS WITH FACILITIES					
2003					
June Quarter	6 607	35.5	2 876	2.3	553 849
September Quarter	7 940	42.4	3 340	2.4	664 512
December Quarter	8 298	44.7	3 590	2.3	759 603
2004					
March Quarter	7 940	43.2	3 343	2.4	691 864
June Quarter	7 289	39.4	3 209	2.3	627 765
September Quarter	8 304	44.0	3 586	2.3	720 863
Year ended September 2003	29 914	40.3	12 776	2.3	2 508 292
Year ended September 2004	31 832	42.8	13 728	2.3	2 800 095
.....					
MOTELS AND GUEST HOUSES WITH FACILITIES					
2003					
June Quarter	6 813	30.2	3 831	1.8	351 004
September Quarter	7 706	33.8	4 333	1.8	399 637
December Quarter	7 815	34.6	4 359	1.8	407 394
2004					
March Quarter	7 379	33.3	4 067	1.8	386 199
June Quarter	6 985	31.6	3 984	1.8	368 779
September Quarter	7 809	34.8	4 412	1.8	418 253
Year ended September 2003	28 905	32.2	16 181	1.8	1 482 903
Year ended September 2004	29 987	33.6	16 823	1.8	1 580 624
.....					
SERVICED APARTMENTS					
2003					
June Quarter	4 571	39.2	1 293	3.5	254 647
September Quarter	5 447	46.0	1 495	3.6	309 339
December Quarter	5 701	47.3	1 589	3.6	332 348
2004					
March Quarter	5 602	46.7	1 513	3.7	320 510
June Quarter	4 903	40.6	1 420	3.5	280 920
September Quarter	5 883	47.8	1 654	3.6	346 601
Year ended September 2003	19 523	43.6	5 364	3.6	1 100 542
Year ended September 2004	22 089	45.6	6 176	3.6	1 280 378
.....					
HOTELS, MOTELS AND SERVICED APARTMENTS					
2003					
June Quarter	17 991	34.1	8 000	2.2	1 159 500
September Quarter	21 093	39.6	9 167	2.3	1 373 488
December Quarter	21 814	41.0	9 539	2.3	1 499 344
2004					
March Quarter	20 921	39.8	8 923	2.3	1 398 573
June Quarter	19 177	36.4	8 613	2.2	1 277 463
September Quarter	21 996	41.0	9 653	2.3	1 485 716
Year ended September 2003	78 342	37.5	34 320	2.3	5 091 737
Year ended September 2004	83 908	39.6	36 727	2.3	5 661 098

(a) Break in time series between the March and June quarters 2003. See Explanatory Notes.

HOTELS, MOTELS AND SERVICED APARTMENTS, Star grading(a)—Australia

Period	Licensed hotels with facilities	Motels and guest houses	Serviced apartments	STAR GRADING						Ungraded	Total
				1	2	3	4	5			
ESTABLISHMENTS, CAPACITY AND EMPLOYMENT (no.)											
September Quarter 2003											
Establishments	794	2 416	775	66	374	1 865	1 311	122	247	3 985	
Rooms	77 914	85 198	39 921	2 711	11 447	67 991	88 648	24 186	8 050	203 033	
Bed spaces	203 346	247 709	129 429	8 405	32 999	200 265	256 487	60 481	21 847	580 484	
Persons employed	70 105	30 074	13 268	605	4 941	24 095	44 990	35 047	3 769	113 447	
September Quarter 2004											
Establishments	789	2 396	800	42	310	1 924	1 381	114	214	3 985	
Rooms	78 777	84 452	41 601	1 293	10 034	70 352	92 599	23 731	6 821	204 830	
Bed spaces	205 297	244 387	134 186	4 442	28 259	205 878	267 810	59 000	18 481	583 870	
Persons employed	70 088	29 244	13 714	500	3 909	24 745	47 191	33 434	3 267	113 046	
ROOM NIGHTS OCCUPIED ('000)											
2003											
September Quarter	4 809.5	4 356.4	2 492.2	134.0	468.5	3 560.5	5 532.9	1 606.2	356.1	11 658.1	
2004											
July	1 662.4	1 474.7	894.7	20.3	152.4	1 268.4	1 972.1	512.4	106.1	4 031.8	
August	1 688.9	1 430.1	882.4	21.0	146.3	1 223.4	1 961.6	543.0	106.0	4 001.4	
September	1 670.5	1 492.6	891.6	16.4	147.3	1 275.0	1 981.4	527.3	107.3	4 054.7	
September Quarter	5 021.7	4 397.4	2 668.8	57.7	446.0	3 766.9	5 915.1	1 582.7	319.5	12 087.9	
ROOM OCCUPANCY RATE (%)											
2003											
September Quarter	67.1	55.6	68.3	53.7	44.5	57.0	67.9	72.2	49.4	62.5	
2004											
July	68.1	56.3	69.7	50.5	49.1	58.2	68.7	70.2	50.6	63.6	
August	69.2	54.7	68.5	52.5	47.2	56.2	68.4	74.0	50.2	63.1	
September	70.7	59.0	71.5	42.4	49.1	60.4	71.4	74.1	52.5	66.0	
September Quarter	69.3	56.7	69.9	48.5	48.4	58.2	69.5	72.7	51.0	64.2	
GUEST NIGHTS OCCUPIED ('000)											
2003											
September Quarter	7 939.5	7 706.3	5 447.0	272.2	844.4	6 694.6	10 055.7	2 602.2	623.7	21 092.8	
2004											
July	2 814.3	2 691.0	2 024.1	41.0	281.1	2 447.7	3 730.2	839.0	190.4	7 529.3	
August	2 738.5	2 471.3	1 859.1	45.6	259.3	2 240.5	3 489.9	850.7	183.0	7 069.0	
September	2 751.6	2 646.4	1 999.8	31.6	264.0	2 409.0	3 663.1	842.2	188.0	7 397.9	
September Quarter	8 304.5	7 808.7	5 883.0	118.2	804.4	7 097.1	10 883.2	2 531.9	561.4	21 996.2	
BED OCCUPANCY RATE (%)											
2003											
September Quarter	42.4	33.8	46.0	35.2	27.8	36.4	42.6	46.8	31.7	39.6	
2004											
July	44.3	35.5	48.8	29.8	32.3	38.4	45.0	46.3	33.5	41.7	
August	43.0	32.7	44.7	33.1	29.8	35.1	42.1	46.6	31.9	39.1	
September	44.7	36.1	49.7	23.7	31.4	39.0	45.6	47.6	33.9	42.3	
September Quarter	44.0	34.8	47.8	28.9	31.1	37.5	44.2	46.8	33.1	41.0	

(a) Star grade classifications have been revised. See Explanatory Notes.

Period	Licensed hotels with facilities	Motels and guest houses	Serviced apartments	STAR GRADING						Total
				1	2	3	4	5	Ungraded	
GUEST ARRIVALS ('000)										
2003										
September Quarter	3 340.0	4 332.5	1 494.5	149.3	463.0	3 299.6	3 954.6	1 034.2	266.6	9 167.1
2004										
July	1 204.2	1 520.7	565.9	18.6	161.1	1 206.0	1 489.5	334.6	80.9	3 290.7
August	1 191.2	1 395.8	523.8	19.6	149.9	1 107.1	1 415.4	340.4	78.4	3 110.8
September	1 190.7	1 495.9	564.5	16.3	156.1	1 194.5	1 468.7	334.6	80.9	3 251.1
September Quarter	3 586.1	4 412.3	1 654.2	54.5	467.1	3 507.6	4 373.6	1 009.6	240.2	9 652.6
AVERAGE LENGTH OF STAY (days)										
2003										
September Quarter	2.4	1.8	3.6	1.8	1.8	2.0	2.5	2.5	2.3	2.3
2004										
July	2.3	1.8	3.6	2.2	1.7	2.0	2.5	2.5	2.4	2.3
August	2.3	1.8	3.5	2.3	1.7	2.0	2.5	2.5	2.3	2.3
September	2.3	1.8	3.5	1.9	1.7	2.0	2.5	2.5	2.3	2.3
September Quarter	2.3	1.8	3.6	2.2	1.7	2.0	2.5	2.5	2.3	2.3
TAKINGS FROM ACCOMMODATION (\$'000)										
2003										
September Quarter	664 512	399 637	309 339	8 822	34 029	317 507	677 696	299 870	35 565	1 373 488
2004										
July	234 953	141 377	115 438	1 539	11 394	118 195	250 780	97 366	12 494	491 768
August	245 971	137 693	114 023	2 365	11 061	114 222	250 991	106 674	12 374	497 687
September	239 938	139 183	117 139	1 330	10 284	115 424	253 798	104 044	11 381	496 261
September Quarter	720 863	418 253	346 601	5 234	32 739	347 841	755 569	308 084	36 250	1 485 716
AVERAGE TAKINGS PER ROOM NIGHT OCCUPIED (\$)										
2003										
September Quarter	138.2	91.7	124.1	65.9	72.6	89.2	122.5	186.7	99.9	117.8
2004										
July	141.3	95.9	129.0	76.0	74.8	93.2	127.2	190.0	117.7	122.0
August	145.6	96.3	129.2	112.5	75.6	93.4	128.0	196.5	116.7	124.4
September	143.6	93.3	131.4	80.8	69.8	90.5	128.1	197.3	106.0	122.4
September Quarter	143.5	95.1	129.9	90.7	73.4	92.3	127.7	194.7	113.5	122.9
AVERAGE TAKINGS PER AVAILABLE ROOM NIGHT (\$)										
2003										
September Quarter	92.7	51.0	84.7	35.4	32.3	50.8	83.1	134.8	49.3	73.6
2004										
July	96.3	54.0	89.9	38.4	36.7	54.2	87.4	133.4	59.5	77.6
August	100.7	52.7	88.6	59.0	35.6	52.4	87.5	145.3	58.5	78.5
September	101.5	55.0	94.0	34.3	34.3	54.7	91.4	146.1	55.6	80.8
September Quarter	99.5	53.9	90.8	44.0	35.6	53.8	88.7	141.6	57.9	78.9

(a) Star grade classifications have been revised. See Explanatory Notes.

Period	Licensed hotels with facilities	Motels and guest houses	Serviced apartments	STAR GRADING					Ungraded	Total
				1	2	3	4	5		
ESTABLISHMENTS, CAPACITY AND EMPLOYMENT (no.)										
September Quarter 2003										
Establishments	201	986	157	34	135	731	338	28	78	1 344
Rooms	23 017	32 672	8 314	1 578	4 043	24 445	24 397	7 122	2 418	64 003
Bed spaces	55 992	95 231	26 074	5 402	11 762	71 017	66 001	16 419	6 696	177 297
Persons employed	19 076	10 913	2 920	230	1 613	7 797	12 963	9 324	982	32 909
September Quarter 2004										
Establishments	198	987	167	22	102	768	360	28	72	1 352
Rooms	23 025	32 538	8 904	862	3 279	25 657	25 512	7 126	2 031	64 467
Bed spaces	57 079	94 216	27 908	3 284	9 443	73 905	70 039	16 526	6 006	179 203
Persons employed	18 573	10 702	2 915	204	1 077	8 002	12 980	9 009	918	32 190
ROOM NIGHTS OCCUPIED ('000)										
2003										
September Quarter	1 514.0	1 649.0	508.1	78.3	174.7	1 269.1	1 587.0	462.6	99.2	3 671.0
2004										
July	518.4	546.1	178.7	15.0	55.1	438.5	554.9	150.9	28.9	1 243.3
August	532.7	519.4	170.1	15.1	51.1	418.3	543.1	166.5	28.0	1 222.1
September	507.1	561.5	178.6	10.8	53.0	450.1	547.0	155.9	30.4	1 247.2
September Quarter	1 558.2	1 627.0	527.4	40.9	159.2	1 306.9	1 644.9	473.3	87.3	3 712.6
ROOM OCCUPANCY RATE (%)										
2003										
September Quarter	71.5	54.9	67.4	54.0	47.0	56.5	70.7	70.6	46.9	62.5
2004										
July	72.6	54.1	65.1	56.0	54.2	55.1	70.2	68.3	47.0	62.3
August	74.6	51.6	61.6	56.6	50.3	52.7	68.7	75.4	44.5	61.2
September	73.4	57.5	67.3	41.8	53.9	58.5	71.6	72.9	49.9	64.5
September Quarter	73.6	54.4	64.6	51.6	52.8	55.4	70.1	72.2	47.1	62.7
GUEST NIGHTS OCCUPIED ('000)										
2003										
September Quarter	2 494.9	2 955.4	1 065.5	171.2	331.9	2 361.2	2 749.1	715.3	187.1	6 515.9
2004										
July	883.6	1 014.6	393.4	33.4	109.2	836.4	1 006.6	244.6	61.5	2 291.6
August	863.4	901.2	343.3	36.6	98.6	748.7	912.7	254.1	57.2	2 107.9
September	822.5	999.2	376.3	24.0	100.7	820.7	945.4	243.9	63.4	2 198.0
September Quarter	2 569.5	2 915.0	1 113.1	93.9	308.5	2 405.8	2 864.7	742.5	182.1	6 597.5
BED OCCUPANCY RATE (%)										
2003										
September Quarter	48.4	33.8	44.9	34.4	30.7	36.2	45.3	47.4	31.5	40.0
2004										
July	49.9	34.7	45.7	32.8	37.3	36.5	46.4	47.7	33.7	41.3
August	48.8	30.9	39.7	36.0	33.7	32.7	42.1	49.6	30.7	38.0
September	48.0	35.4	45.2	24.3	35.6	37.0	45.1	49.2	35.2	40.9
September Quarter	48.9	33.7	43.5	31.1	35.5	35.4	44.5	48.8	33.2	40.1

(a) Star grade classifications have been revised. See Explanatory Notes.

Period	Licensed hotels with facilities	Motels and guest houses	Serviced apartments	STAR GRADING						Ungraded	Total
				1	2	3	4	5			
GUEST ARRIVALS ('000)											
2003											
September Quarter	1 048.4	1 839.0	340.9	86.0	185.7	1 321.7	1 228.2	318.5	88.2	3 228.3	
2004											
July	352.8	633.0	129.2	14.5	63.2	481.0	430.3	99.2	26.7	1 114.9	
August	354.3	559.4	115.4	15.3	57.2	425.2	403.3	103.6	24.6	1 029.1	
September	337.0	619.6	129.2	11.9	60.3	474.1	414.8	97.2	27.5	1 085.8	
September Quarter	1 044.1	1 812.0	373.8	41.7	180.7	1 380.2	1 248.4	300.0	78.8	3 229.8	
AVERAGE LENGTH OF STAY (days)											
2003											
September Quarter	2.4	1.6	3.1	2.0	1.8	1.8	2.2	2.2	2.1	2.0	
2004											
July	2.5	1.6	3.0	2.3	1.7	1.7	2.3	2.5	2.3	2.1	
August	2.4	1.6	3.0	2.4	1.7	1.8	2.3	2.5	2.3	2.0	
September	2.4	1.6	2.9	2.0	1.7	1.7	2.3	2.5	2.3	2.0	
September Quarter	2.5	1.6	3.0	2.3	1.7	1.7	2.3	2.5	2.3	2.0	
TAKINGS FROM ACCOMMODATION (\$'000)											
2003											
September Quarter	231 989	155 119	72 438	5 523	14 531	118 680	214 048	94 230	12 533	459 546	
2004											
July	82 321	53 807	26 073	1 210	4 678	42 076	77 640	31 825	4 774	162 202	
August	88 042	50 851	25 322	1 991	4 697	40 021	76 943	36 004	4 558	164 215	
September	80 420	52 962	25 820	981	4 016	41 164	75 631	33 619	3 791	159 202	
September Quarter	250 782	157 621	77 216	4 182	13 390	123 260	230 214	101 448	13 124	485 619	
AVERAGE TAKINGS PER ROOM NIGHT OCCUPIED (\$)											
2003											
September Quarter	153.2	94.1	142.6	70.5	83.2	93.5	134.9	203.7	126.3	125.2	
2004											
July	158.8	98.5	145.9	80.8	84.9	95.9	139.9	210.9	165.4	130.5	
August	165.3	97.9	148.9	131.6	91.9	95.7	141.7	216.2	162.6	134.4	
September	158.6	94.3	144.6	90.8	75.7	91.4	138.3	215.7	124.7	127.6	
September Quarter	160.9	96.9	146.4	102.2	84.1	94.3	140.0	214.3	150.3	130.8	
AVERAGE TAKINGS PER AVAILABLE ROOM NIGHT (\$)											
2003											
September Quarter	109.6	51.6	96.2	38.0	39.1	52.8	95.4	143.8	59.2	78.2	
2004											
July	115.3	53.3	95.0	45.3	46.0	52.9	98.2	144.1	77.7	81.2	
August	123.3	50.5	91.7	74.5	46.2	50.4	97.4	163.0	72.4	82.3	
September	116.4	54.3	97.2	37.9	40.8	53.5	99.0	157.3	62.2	82.4	
September Quarter	118.4	52.7	94.6	52.7	44.4	52.3	98.2	154.7	70.8	82.0	

(a) Star grade classifications have been revised. See Explanatory Notes.

Period	Licensed hotels with facilities	Motels and guest houses	Serviced apartments	STAR GRADING						Ungraded	Total
				1	2	3	4	5			
ESTABLISHMENTS, CAPACITY AND EMPLOYMENT (no.)											
September Quarter 2003											
Establishments	134	508	106	5	51	356	292	22	22	748	
Rooms	13 041	16 225	5 676	292	1 436	11 712	16 188	4 541	773	34 942	
Bed spaces	30 158	47 452	17 240	892	4 435	33 512	43 940	9 661	2 410	94 850	
Persons employed	14 270	5 877	1 750	58	634	3 946	7 488	9 270	501	21 897	
September Quarter 2004											
Establishments	137	496	106	2	41	344	311	21	20	739	
Rooms	13 775	15 877	5 647	np	np	11 503	17 320	4 432	697	35 299	
Bed spaces	32 036	46 048	17 481	np	np	32 576	47 478	9 557	1 984	95 565	
Persons employed	14 845	5 449	1 561	np	np	3 608	8 040	9 130	509	21 855	
ROOM NIGHTS OCCUPIED ('000)											
2003											
September Quarter	773.7	690.1	358.9	17.4	38.7	523.3	899.8	307.1	36.4	1 822.7	
2004											
July	293.6	236.0	125.1	np	16.0	180.8	341.4	107.6	np	654.7	
August	287.9	224.8	120.6	np	np	169.0	332.0	108.6	8.9	633.3	
September	286.9	239.4	119.0	np	np	176.9	339.5	103.4	np	645.4	
September Quarter	868.5	700.3	364.7	np	np	526.8	1 012.9	319.7	26.2	1 933.4	
ROOM OCCUPANCY RATE (%)											
2003											
September Quarter	64.5	46.2	68.7	64.9	29.3	48.6	60.4	73.5	51.2	56.7	
2004											
July	68.8	48.0	71.6	np	40.3	50.7	63.6	78.3	np	59.9	
August	67.4	45.7	68.9	np	np	47.4	61.8	79.1	41.0	57.9	
September	69.4	50.4	70.2	np	np	51.3	65.3	77.8	np	61.0	
September Quarter	68.5	48.0	70.2	np	np	49.8	63.6	78.4	40.8	59.6	
GUEST NIGHTS OCCUPIED ('000)											
2003											
September Quarter	1 191.3	1 207.0	693.9	33.1	72.0	964.2	1 511.8	445.9	65.2	3 092.2	
2004											
July	461.0	424.2	256.0	np	29.7	341.6	591.3	160.6	np	1 141.2	
August	440.7	385.2	226.8	np	np	308.9	543.3	155.7	17.6	1 052.8	
September	438.0	420.9	229.3	np	np	325.4	568.0	148.5	np	1 088.3	
September Quarter	1 339.7	1 230.4	712.1	np	np	975.9	1 702.7	464.8	50.8	3 282.3	
BED OCCUPANCY RATE (%)											
2003											
September Quarter	42.9	27.6	43.7	40.4	17.6	31.3	37.4	50.2	29.4	35.4	
2004											
July	46.4	29.8	47.4	np	26.0	33.8	40.2	54.2	np	38.6	
August	44.4	27.1	41.9	np	np	30.6	36.9	52.6	28.7	35.6	
September	45.6	30.6	43.7	np	np	33.3	39.9	51.8	np	38.0	
September Quarter	45.5	29.1	44.3	np	np	32.6	39.0	52.9	27.8	37.4	

np not available for publication but included in totals where applicable, unless otherwise indicated

(a) Star grade classifications have been revised. See Explanatory Notes.

Period	Licensed hotels with facilities	Motels and guest houses	Serviced apartments	STAR GRADING						Ungraded	Total
				1	2	3	4	5			
GUEST ARRIVALS ('000)											
2003											
September Quarter	548.2	699.5	223.3	27.1	40.1	492.9	684.9	202.4	23.5	1 471.0	
2004											
July	213.6	246.1	75.9	np	18.9	173.4	267.9	68.1	np	535.6	
August	206.9	221.9	69.7	np	np	157.2	248.3	67.4	8.1	498.5	
September	207.8	246.4	68.0	np	np	167.6	261.9	65.6	np	522.3	
September Quarter	628.3	714.5	213.6	np	np	498.2	778.1	201.0	22.5	1 556.4	
AVERAGE LENGTH OF STAY (days)											
2003											
September Quarter	2.2	1.7	3.1	1.2	1.8	2.0	2.2	2.2	2.8	2.1	
2004											
July	2.2	1.7	3.4	np	1.6	2.0	2.2	2.4	np	2.1	
August	2.1	1.7	3.3	np	np	2.0	2.2	2.3	2.2	2.1	
September	2.1	1.7	3.4	np	np	1.9	2.2	2.3	np	2.1	
September Quarter	2.1	1.7	3.3	np	np	2.0	2.2	2.3	2.3	2.1	
TAKINGS FROM ACCOMMODATION (\$'000)											
2003											
September Quarter	111 806	66 875	50 079	1 018	2 448	48 705	114 571	57 467	4 552	228 760	
2004											
July	42 632	24 201	18 275	np	1 096	17 743	45 398	19 623	np	85 108	
August	42 268	23 293	17 657	np	np	17 235	43 788	20 071	1 200	83 218	
September	42 296	23 078	17 313	np	np	16 182	44 669	19 645	np	82 687	
September Quarter	127 196	70 573	53 244	np	np	51 159	133 855	59 339	3 586	251 013	
AVERAGE TAKINGS PER ROOM NIGHT OCCUPIED (\$)											
2003											
September Quarter	144.5	96.9	139.5	58.3	63.2	93.1	127.3	187.1	125.0	125.5	
2004											
July	145.2	102.5	146.1	np	68.5	98.1	133.0	182.4	np	130.0	
August	146.8	103.6	146.4	np	np	102.0	131.9	184.8	135.3	131.4	
September	147.4	96.4	145.5	np	np	91.5	131.6	189.9	np	128.1	
September Quarter	146.5	100.8	146.0	np	np	97.1	132.1	185.6	137.0	129.8	
AVERAGE TAKINGS PER AVAILABLE ROOM NIGHT (\$)											
2003											
September Quarter	93.2	44.8	95.9	37.9	18.5	45.2	76.9	137.6	64.0	71.2	
2004											
July	99.8	49.2	104.6	np	27.6	49.8	84.6	142.8	np	77.9	
August	99.0	47.4	100.9	np	np	48.3	81.6	146.1	55.5	76.1	
September	102.3	48.6	102.2	np	np	46.9	86.0	147.7	np	78.2	
September Quarter	100.4	48.4	102.6	np	np	48.3	84.0	145.5	55.9	77.4	

np not available for publication but included in totals where applicable, unless otherwise indicated

(a) Star grade classifications have been revised. See Explanatory Notes.

Period	Licensed hotels with facilities	Motels and guest houses	Serviced apartments	STAR GRADING						Ungraded	Total
				1	2	3	4	5			
ESTABLISHMENTS, CAPACITY AND EMPLOYMENT (no.)											
September Quarter 2003											
Establishments	170	518	322	12	82	408	414	42	52	1 010	
Rooms	20 516	18 574	15 677	335	2 103	14 949	28 589	7 055	1 736	54 767	
Bed spaces	62 662	54 397	51 780	889	6 157	46 635	89 610	20 710	4 838	168 839	
Persons employed	20 268	6 644	4 844	92	983	5 241	13 396	11 347	697	31 756	
September Quarter 2004											
Establishments	171	512	333	8	77	430	430	37	34	1 016	
Rooms	20 472	18 367	16 353	159	2 116	16 273	28 995	6 573	1 076	55 192	
Bed spaces	61 407	53 900	53 871	388	6 271	50 696	90 040	18 987	2 796	169 178	
Persons employed	20 106	6 590	5 186	60	836	6 211	13 717	10 514	544	31 882	
ROOM NIGHTS OCCUPIED ('000)											
2003											
September Quarter	1 310.2	1 150.6	1 025.8	16.6	100.5	937.2	1 869.0	473.3	89.9	3 486.6	
2004											
July	454.3	403.1	369.2	2.1	38.5	363.2	660.9	139.5	22.2	1 226.5	
August	456.1	404.5	378.7	2.2	37.4	358.7	671.6	146.7	22.8	1 239.3	
September	452.4	388.4	375.5	2.0	35.6	351.4	663.0	143.4	20.9	1 216.4	
September Quarter	1 362.8	1 196.0	1 123.4	6.3	111.5	1 073.3	1 995.6	429.7	65.9	3 682.2	
ROOM OCCUPANCY RATE (%)											
2003											
September Quarter	69.4	67.5	71.1	53.9	52.2	68.2	71.1	72.9	56.9	69.3	
2004											
July	71.6	70.8	73.4	41.8	58.7	72.0	73.6	69.7	66.6	71.9	
August	71.9	71.0	75.0	44.9	57.0	71.1	74.8	72.5	68.3	72.5	
September	73.7	70.5	76.5	42.6	56.1	72.0	76.2	72.7	64.8	73.5	
September Quarter	72.4	70.8	75.0	43.1	57.3	71.7	74.8	71.6	66.6	72.6	
GUEST NIGHTS OCCUPIED ('000)											
2003											
September Quarter	2 418.0	2 058.9	2 462.8	31.2	171.6	1 900.3	3 808.7	867.1	160.8	6 939.7	
2004											
July	849.0	736.0	908.7	2.9	68.7	741.1	1 395.1	249.3	36.7	2 493.7	
August	818.3	706.5	878.2	2.8	64.8	692.1	1 353.1	253.2	36.9	2 402.9	
September	849.8	701.5	953.3	2.6	63.1	727.4	1 418.3	258.5	34.6	2 504.6	
September Quarter	2 517.1	2 144.0	2 740.2	8.4	196.6	2 160.7	4 166.5	761.0	108.2	7 401.3	
BED OCCUPANCY RATE (%)											
2003											
September Quarter	41.9	41.2	51.7	38.2	30.4	44.3	46.2	45.5	36.5	44.7	
2004											
July	44.6	44.0	54.7	24.2	35.3	47.2	50.0	42.9	42.3	47.6	
August	43.0	42.3	52.8	23.6	33.3	44.0	48.5	43.2	42.6	45.9	
September	46.1	43.4	59.0	22.7	33.5	47.9	52.5	45.4	41.3	49.4	
September Quarter	44.6	43.2	55.5	23.5	34.1	46.3	50.3	43.8	42.1	47.6	

(a) Star grade classifications have been revised. See Explanatory Notes.

Period	Licensed hotels with facilities	Motels and guest houses	Serviced apartments	STAR GRADING						Ungraded	Total
				1	2	3	4	5			
GUEST ARRIVALS ('000)											
2003											
September Quarter	847.4	990.7	540.9	13.0	97.7	754.1	1 183.7	270.1	60.3	2 379.0	
2004											
July	334.9	367.5	207.7	1.3	40.1	294.3	473.5	87.8	13.2	910.1	
August	327.9	354.0	195.0	1.3	39.4	277.4	456.0	89.1	13.6	876.9	
September	328.7	350.9	213.4	1.3	36.4	282.2	469.7	90.4	13.0	893.0	
September Quarter	991.5	1 072.4	616.0	3.9	115.9	853.9	1 399.2	267.3	39.8	2 680.0	
AVERAGE LENGTH OF STAY (days)											
2003											
September Quarter	2.9	2.1	4.6	2.4	1.8	2.5	3.2	3.2	2.7	2.9	
2004											
July	2.5	2.0	4.4	2.3	1.7	2.5	2.9	2.8	2.8	2.7	
August	2.5	2.0	4.5	2.1	1.6	2.5	3.0	2.8	2.7	2.7	
September	2.6	2.0	4.5	2.1	1.7	2.6	3.0	2.9	2.7	2.8	
September Quarter	2.5	2.0	4.4	2.2	1.7	2.5	3.0	2.8	2.7	2.8	
TAKINGS FROM ACCOMMODATION (\$'000)											
2003											
September Quarter	181 013	98 889	112 664	974	6 514	77 343	207 676	92 250	7 810	392 567	
2004											
July	64 144	36 134	42 941	124	2 590	32 817	76 936	28 591	2 161	143 219	
August	67 575	36 626	43 987	142	2 444	32 021	79 371	31 961	2 249	148 189	
September	66 600	35 312	46 411	123	2 408	32 238	81 369	30 120	2 063	148 322	
September Quarter	198 319	108 072	133 339	390	7 442	97 077	237 676	90 673	6 474	439 731	
AVERAGE TAKINGS PER ROOM NIGHT OCCUPIED (\$)											
2003											
September Quarter	138.2	85.9	109.8	58.7	64.8	82.5	111.1	194.9	86.8	112.6	
2004											
July	141.2	89.7	116.3	60.4	67.2	90.4	116.4	204.9	97.2	116.8	
August	148.2	90.5	116.2	64.4	65.4	89.3	118.2	217.9	98.7	119.6	
September	147.2	90.9	123.6	60.5	67.7	91.7	122.7	210.0	98.6	121.9	
September Quarter	145.5	90.4	118.7	61.8	66.8	90.5	119.1	211.0	98.2	119.4	
AVERAGE TAKINGS PER AVAILABLE ROOM NIGHT (\$)											
2003											
September Quarter	95.9	58.0	78.1	31.6	33.8	56.3	79.0	142.1	49.4	78.0	
2004											
July	101.1	63.5	85.4	25.2	39.5	65.1	85.7	142.7	64.8	83.9	
August	106.5	64.3	87.1	28.9	37.3	63.5	88.4	158.0	67.4	86.7	
September	108.4	64.1	94.6	25.8	37.9	66.1	93.5	152.7	63.9	89.6	
September Quarter	105.3	64.0	89.0	26.6	38.2	64.9	89.1	151.2	65.4	86.7	

(a) Star grade classifications have been revised. See Explanatory Notes.

Period	Licensed hotels with facilities	Motels and guest houses	Serviced apartments	STAR GRADING					Ungraded	Total
				1	2	3	4	5		
ESTABLISHMENTS, CAPACITY AND EMPLOYMENT (no.)										
September Quarter 2003										
Establishments	66	145	35	7	44	113	66	9	7	246
Rooms	4 807	5 264	1 615	162	1 628	3 637	4 054	2 033	172	11 686
Bed spaces	11 440	15 389	5 582	447	4 225	10 740	11 984	4 544	471	32 411
Persons employed	4 098	2 262	618	81	905	1 694	2 680	1 502	116	6 978
September Quarter 2004										
Establishments	67	143	35	7	37	119	63	9	10	245
Rooms	4 950	5 189	1 747	np	1 457	3 746	4 046	np	450	11 886
Bed spaces	11 938	15 358	5 946	np	3 758	11 050	12 124	np	1 214	33 242
Persons employed	4 298	2 199	642	np	818	1 780	2 668	np	156	7 139
ROOM NIGHTS OCCUPIED ('000)										
2003										
September Quarter	257.1	241.5	95.3	4.1	56.0	169.5	218.8	138.0	7.5	593.9
2004										
July	83.0	72.2	35.8	np	15.7	53.5	70.5	np	6.0	191.0
August	90.3	74.5	35.1	np	16.8	54.6	72.6	np	6.5	200.0
September	93.6	84.8	37.6	np	17.3	62.3	79.7	np	7.8	216.0
September Quarter	267.0	231.5	108.5	np	49.7	170.5	222.7	np	20.2	607.0
ROOM OCCUPANCY RATE (%)										
2003										
September Quarter	58.1	49.9	64.9	27.6	37.4	50.7	58.9	73.8	47.2	55.3
2004										
July	54.1	44.9	66.1	np	34.7	46.1	56.2	np	42.7	51.8
August	58.9	46.3	64.9	np	37.2	47.0	57.9	np	46.4	54.3
September	63.0	54.5	71.7	np	39.5	55.5	65.6	np	57.7	60.6
September Quarter	58.6	48.5	67.5	np	37.1	49.5	59.8	np	48.8	55.5
GUEST NIGHTS OCCUPIED ('000)										
2003										
September Quarter	365.9	397.3	178.3	7.2	90.0	291.8	359.6	179.5	13.3	941.4
2004										
July	124.7	122.2	68.9	np	26.2	93.5	120.2	np	10.7	315.8
August	129.5	117.7	63.3	np	26.0	89.6	115.6	np	11.0	310.5
September	137.0	143.5	72.0	np	28.6	108.6	134.6	np	13.9	352.5
September Quarter	391.3	383.4	204.2	np	80.8	291.7	370.5	np	35.6	978.8
BED OCCUPANCY RATE (%)										
2003										
September Quarter	34.8	28.1	35.0	17.5	23.2	29.5	32.7	42.9	30.7	31.6
2004										
July	33.7	25.7	37.4	np	22.5	27.3	32.0	np	28.3	30.6
August	35.0	24.7	34.3	np	22.3	26.2	30.8	np	29.3	30.1
September	38.3	31.1	40.3	np	25.4	32.8	37.0	np	38.3	35.3
September Quarter	35.6	27.1	37.3	np	23.4	28.7	33.2	np	31.9	32.0

np not available for publication but included in totals where applicable, unless otherwise indicated

(a) Star grade classifications have been revised. See Explanatory Notes.

Period	Licensed hotels with facilities	Motels and guest houses	Serviced apartments	STAR GRADING					Ungraded	Total
				1	2	3	4	5		
GUEST ARRIVALS ('000)										
2003										
September Quarter	198.2	230.1	56.9	4.8	53.7	161.4	164.4	95.0	5.9	485.2
2004										
July	61.3	71.6	24.4	np	14.4	55.0	51.3	np	4.7	157.3
August	63.8	69.1	23.2	np	13.9	53.4	51.3	np	4.9	156.1
September	66.2	82.0	25.2	np	16.1	63.7	56.7	np	5.3	173.5
September Quarter	191.3	222.7	72.9	np	44.4	172.1	159.2	np	14.8	486.9
AVERAGE LENGTH OF STAY (days)										
2003										
September Quarter	1.8	1.7	3.1	1.5	1.7	1.8	2.2	1.9	2.3	1.9
2004										
July	2.0	1.7	2.8	np	1.8	1.7	2.3	np	2.3	2.0
August	2.0	1.7	2.7	np	1.9	1.7	2.3	np	2.3	2.0
September	2.1	1.7	2.9	np	1.8	1.7	2.4	np	2.6	2.0
September Quarter	2.0	1.7	2.8	np	1.8	1.7	2.3	np	2.4	2.0
TAKINGS FROM ACCOMMODATION (\$'000)										
2003										
September Quarter	29 050	21 236	10 261	251	3 424	13 420	24 237	18 577	637	60 546
2004										
July	9 102	6 482	3 965	np	1 021	4 260	8 011	np	720	19 548
August	10 030	6 611	3 943	np	1 104	4 297	8 189	np	780	20 584
September	10 494	7 656	4 398	np	1 151	5 061	8 920	np	941	22 547
September Quarter	29 625	20 749	12 305	np	3 277	13 618	25 120	np	2 441	62 679
AVERAGE TAKINGS PER ROOM NIGHT OCCUPIED (\$)										
2003										
September Quarter	113.0	87.9	107.6	61.1	61.1	79.2	110.8	134.6	85.4	101.9
2004										
July	109.7	89.7	110.8	np	65.2	79.6	113.7	np	121.0	102.3
August	111.0	88.8	112.2	np	65.8	78.7	112.8	np	120.5	102.9
September	112.1	90.3	117.1	np	66.7	81.2	111.9	np	120.8	104.4
September Quarter	111.0	89.6	113.4	np	65.9	79.9	112.8	np	120.7	103.3
AVERAGE TAKINGS PER AVAILABLE ROOM NIGHT (\$)										
2003										
September Quarter	65.7	43.8	69.9	16.9	22.9	40.1	65.3	99.3	40.3	56.4
2004										
July	59.3	40.3	73.2	np	22.6	36.7	63.9	np	51.6	53.1
August	65.4	41.1	72.8	np	24.4	37.0	65.3	np	55.9	55.9
September	70.7	49.2	83.9	np	26.3	45.0	73.5	np	69.7	63.2
September Quarter	65.1	43.5	76.6	np	24.4	39.5	67.5	np	59.0	57.3

np not available for publication but included in totals where applicable, unless otherwise indicated

(a) Star grade classifications have been revised. See Explanatory Notes.

Period	Licensed hotels with facilities	Motels and guest houses	Serviced apartments	STAR GRADING						Ungraded	Total
				1	2	3	4	5			
ESTABLISHMENTS, CAPACITY AND EMPLOYMENT (no.)											
September Quarter 2003											
Establishments	130	130	85	2	21	134	108	17	63	345	
Rooms	9 587	5 763	4 835	np	np	7 001	7 436	2 832	2 248	20 185	
Bed spaces	24 469	15 341	16 133	np	np	19 223	22 053	7 779	5 403	55 943	
Persons employed	6 330	1 773	1 757	np	np	2 631	3 462	2 407	1 080	9 860	
September Quarter 2004											
Establishments	123	131	86	—	22	135	115	16	52	340	
Rooms	9 517	5 950	4 908	—	680	6 808	8 080	3 053	1 754	20 375	
Bed spaces	24 392	15 746	16 167	—	1 526	18 670	23 789	8 080	4 240	56 305	
Persons employed	6 084	1 766	1 967	—	248	2 460	3 887	2 459	763	9 817	
ROOM NIGHTS OCCUPIED ('000)											
2003											
September Quarter	569.5	264.9	270.7	np	np	355.0	447.5	184.1	90.5	1 105.1	
2004											
July	180.4	97.1	96.3	—	9.7	122.2	157.6	60.6	23.8	373.9	
August	186.4	91.4	90.3	—	10.0	116.7	156.1	61.9	23.4	368.1	
September	191.5	105.1	96.9	—	9.6	125.1	167.1	65.9	25.9	393.5	
September Quarter	558.3	293.7	283.5	—	29.4	364.0	480.8	188.3	73.1	1 135.5	
ROOM OCCUPANCY RATE (%)											
2003											
September Quarter	64.6	50.0	61.8	np	np	55.1	65.4	70.6	45.3	59.7	
2004											
July	61.7	52.7	63.3	—	46.2	58.0	62.9	65.7	43.7	59.4	
August	63.2	49.8	59.3	—	47.6	55.5	62.3	65.4	43.1	58.4	
September	67.1	59.1	65.8	—	47.1	61.5	68.9	71.9	49.1	64.5	
September Quarter	63.9	53.8	62.8	—	46.9	58.3	64.7	67.6	45.3	60.7	
GUEST NIGHTS OCCUPIED ('000)											
2003											
September Quarter	867.4	439.1	588.6	np	np	589.5	797.1	326.9	139.2	1 895.2	
2004											
July	277.4	167.4	220.6	—	16.6	207.2	300.6	104.0	37.0	665.3	
August	277.5	150.1	185.3	—	16.1	187.4	271.2	103.8	34.5	612.9	
September	285.4	172.6	205.8	—	15.5	204.0	296.4	109.2	38.7	663.8	
September Quarter	840.3	490.1	611.6	—	48.2	598.6	868.1	316.9	110.2	1 942.0	
BED OCCUPANCY RATE (%)											
2003											
September Quarter	38.5	31.1	40.2	np	np	33.3	39.3	45.7	29.1	37.0	
2004											
July	37.2	34.3	44.0	—	35.0	35.8	40.8	43.4	28.1	38.4	
August	36.7	30.8	37.0	—	34.0	32.4	36.8	41.4	26.2	35.1	
September	39.0	36.6	42.4	—	33.9	36.5	41.5	45.0	30.5	39.3	
September Quarter	37.6	33.9	41.1	—	34.3	34.9	39.7	43.3	28.2	37.6	

— nil or rounded to zero (including null cells)

(a) Star grade classifications have been revised. See Explanatory Notes.

np not available for publication but included in totals where applicable, unless otherwise indicated

Period	Licensed hotels with facilities	Motels and guest houses	Serviced apartments	STAR GRADING						Ungraded	Total
				1	2	3	4	5			
GUEST ARRIVALS ('000)											
2003											
September Quarter	406.4	215.8	172.6	np	np	273.6	319.9	118.2	62.0	794.8	
2004											
July	132.3	78.5	66.0	—	7.7	93.9	116.2	41.7	17.3	276.8	
August	128.9	73.5	57.2	—	8.0	87.3	108.0	40.1	16.1	259.6	
September	135.5	84.7	67.1	—	8.1	97.3	120.3	43.1	18.5	287.3	
September Quarter	396.7	236.7	190.3	—	23.8	278.5	344.5	124.9	51.9	823.7	
AVERAGE LENGTH OF STAY (days)											
2003											
September Quarter	2.1	2.0	3.4	np	np	2.2	2.5	2.8	2.2	2.4	
2004											
July	2.1	2.1	3.3	—	2.2	2.2	2.6	2.5	2.1	2.4	
August	2.2	2.0	3.2	—	2.0	2.1	2.5	2.6	2.1	2.4	
September	2.1	2.0	3.1	—	1.9	2.1	2.5	2.5	2.1	2.3	
September Quarter	2.1	2.1	3.2	—	2.0	2.1	2.5	2.5	2.1	2.4	
TAKINGS FROM ACCOMMODATION (\$'000)											
2003											
September Quarter	63 346	22 389	33 975	np	np	30 130	52 136	28 568	7 188	119 710	
2004											
July	20 290	8 176	12 518	—	687	10 382	18 291	9 639	1 986	40 985	
August	21 148	7 870	11 600	—	673	9 926	18 258	9 810	1 952	40 618	
September	23 382	8 750	12 531	—	644	10 419	19 846	11 691	2 063	44 663	
September Quarter	64 820	24 796	36 649	—	2 004	30 726	56 394	31 140	6 001	126 265	
AVERAGE TAKINGS PER ROOM NIGHT OCCUPIED (\$)											
2003											
September Quarter	111.2	84.5	125.5	np	np	84.9	116.5	155.2	79.4	108.3	
2004											
July	112.5	84.2	129.9	—	70.6	84.9	116.1	159.2	83.6	109.6	
August	113.4	86.1	128.5	—	67.1	85.1	116.9	158.5	83.3	110.3	
September	122.1	83.2	129.4	—	67.0	83.3	118.8	177.5	79.8	113.5	
September Quarter	116.1	84.4	129.3	—	68.2	84.4	117.3	165.4	82.1	111.2	
AVERAGE TAKINGS PER AVAILABLE ROOM NIGHT (\$)											
2003											
September Quarter	71.8	42.2	77.6	np	np	46.8	76.2	109.6	36.0	64.7	
2004											
July	69.4	44.4	82.3	—	32.6	49.2	73.0	104.6	36.5	65.2	
August	71.7	42.8	76.2	—	31.9	47.2	72.9	103.6	35.9	64.4	
September	81.9	49.2	85.1	—	31.5	51.2	81.9	127.6	39.2	73.2	
September Quarter	74.2	45.4	81.2	—	32.0	49.2	75.9	111.9	37.2	67.5	

— nil or rounded to zero (including null cells)

(a) Star grade classifications have been revised. See Explanatory Notes.

np not available for publication but included in totals where applicable, unless otherwise indicated

Period	Licensed hotels with facilities	Motels and guest houses	Serviced apartments	STAR GRADING						Total
				1	2	3	4	5	Ungraded	
ESTABLISHMENTS, CAPACITY AND EMPLOYMENT (no.)										
September Quarter 2003										
Establishments	54	57	32	1	15	71	46	—	10	143
Rooms	2 929	1 909	1 163	np	np	2 558	2 638	—	np	6 001
Bed spaces	8 163	5 683	3 972	np	np	7 701	7 735	—	np	17 818
Persons employed	2 515	1 013	547	np	np	1 404	2 213	—	np	4 075
September Quarter 2004										
Establishments	55	57	34	1	13	72	50	1	9	146
Rooms	3 023	1 911	1 276	np	461	2 607	2 864	np	np	6 210
Bed spaces	8 281	5 631	4 298	np	1 344	7 615	8 462	np	np	18 210
Persons employed	2 661	945	588	np	205	1 353	2 377	np	np	4 194
ROOM NIGHTS OCCUPIED ('000)										
2003										
September Quarter	114.9	66.6	56.3	np	np	86.7	133.6	—	np	237.8
2004										
July	38.7	21.1	17.9	np	2.7	27.9	44.4	np	np	77.6
August	39.1	20.5	17.4	np	2.7	27.4	43.9	np	np	76.9
September	46.2	25.6	20.8	np	3.8	36.8	48.5	np	np	92.7
September Quarter	124.0	67.2	56.1	np	9.2	92.0	136.7	np	np	247.3
ROOM OCCUPANCY RATE (%)										
2003										
September Quarter	42.7	38.0	52.6	np	np	36.8	55.2	—	np	43.1
2004										
July	41.3	35.5	45.3	np	19.1	34.5	50.0	np	np	40.3
August	41.7	34.9	43.9	np	18.6	33.9	49.7	np	np	40.1
September	51.0	44.7	54.3	np	27.8	47.0	56.4	np	np	49.8
September Quarter	44.6	38.3	47.8	np	21.8	38.4	52.0	np	np	43.3
GUEST NIGHTS OCCUPIED ('000)										
2003										
September Quarter	176.8	120.7	111.7	np	np	164.5	211.9	—	np	409.2
2004										
July	62.5	38.7	35.4	np	4.0	55.6	73.0	np	np	136.6
August	61.1	36.1	32.1	np	3.8	51.8	69.4	np	np	129.3
September	78.9	50.2	42.8	np	6.3	76.0	84.0	np	np	171.9
September Quarter	202.5	124.9	110.3	np	14.1	183.4	226.5	np	np	437.8
BED OCCUPANCY RATE (%)										
2003										
September Quarter	23.5	23.2	30.6	np	np	23.2	29.8	—	np	25.0
2004										
July	24.3	22.1	26.6	np	9.5	23.6	27.8	np	np	24.2
August	23.8	20.9	24.1	np	9.2	21.9	26.6	np	np	23.0
September	31.7	29.7	33.2	np	15.7	33.3	33.1	np	np	31.5
September Quarter	26.6	24.2	27.9	np	11.4	26.2	29.1	np	np	26.2

— nil or rounded to zero (including null cells)

(a) Star grade classifications have been revised. See Explanatory Notes.

np not available for publication but included in totals where applicable, unless otherwise indicated

Period	Licensed hotels with facilities	Motels and guest houses	Serviced apartments	STAR GRADING						Total
				1	2	3	4	5	Ungraded	
GUEST ARRIVALS ('000)										
2003										
September Quarter	97.7	69.0	44.9	np	np	90.6	103.6	—	np	211.6
2004										
July	32.5	21.3	17.3	np	2.4	29.7	36.6	np	np	71.1
August	32.7	20.9	16.1	np	2.2	29.0	35.7	np	np	69.7
September	42.5	28.1	20.5	np	3.9	42.8	41.1	np	np	91.0
September Quarter	107.7	70.3	53.8	np	8.5	101.5	113.4	np	np	231.9
AVERAGE LENGTH OF STAY (days)										
2003										
September Quarter	1.8	1.7	2.5	np	np	1.8	2.0	—	np	1.9
2004										
July	1.9	1.8	2.0	np	1.7	1.9	2.0	np	np	1.9
August	1.9	1.7	2.0	np	1.7	1.8	1.9	np	np	1.9
September	1.9	1.8	2.1	np	1.6	1.8	2.0	np	np	1.9
September Quarter	1.9	1.8	2.1	np	1.7	1.8	2.0	np	np	1.9
TAKINGS FROM ACCOMMODATION (\$'000)										
2003										
September Quarter	11 378	6 344	6 339	np	np	7 330	15 510	—	np	24 061
2004										
July	4 031	2 025	2 114	np	140	2 514	5 257	np	np	8 170
August	4 032	2 029	1 976	np	135	2 467	5 177	np	np	8 038
September	4 778	2 516	2 416	np	205	3 347	5 837	np	np	9 710
September Quarter	12 841	6 571	6 505	np	480	8 328	16 270	np	np	25 917
AVERAGE TAKINGS PER ROOM NIGHT OCCUPIED (\$)										
2003										
September Quarter	99.0	95.3	112.6	np	np	84.6	116.1	—	np	101.2
2004										
July	104.3	96.2	117.9	np	51.2	90.1	118.5	np	np	105.2
August	103.1	99.1	113.8	np	50.8	90.1	118.1	np	np	104.5
September	103.3	98.1	116.1	np	53.3	91.1	120.5	np	np	104.8
September Quarter	103.5	97.8	116.0	np	52.0	90.5	119.0	np	np	104.8
AVERAGE TAKINGS PER AVAILABLE ROOM NIGHT (\$)										
2003										
September Quarter	42.2	36.2	59.2	np	np	31.1	64.1	—	np	43.6
2004										
July	43.0	34.2	53.4	np	9.8	31.1	59.2	np	np	42.4
August	43.0	34.6	50.0	np	9.5	30.5	58.7	np	np	41.9
September	52.7	43.9	63.1	np	14.8	42.8	67.9	np	np	52.1
September Quarter	46.2	37.5	55.4	np	11.3	34.7	61.9	np	np	45.4

— nil or rounded to zero (including null cells)

(a) Star grade classifications have been revised. See Explanatory Notes.

np not available for publication but included in totals where applicable, unless otherwise indicated

Period	Licensed hotels with facilities	Motels and guest houses	Serviced apartments	STAR GRADING						Ungraded	Total
				1	2	3	4	5			
ESTABLISHMENTS, CAPACITY AND EMPLOYMENT (no.)											
September Quarter 2003											
Establishments	24	46	20	4	17	35	18	3	13	90	
Guest rooms	2 108	2 948	1 324	np	685	2 313	2 536	np	364	6 380	
Bed spaces	5 870	8 967	4 283	np	1 951	7 274	7 857	np	983	19 120	
Persons employed	1 865	909	374	np	225	814	1 202	np	174	3 148	
September Quarter 2004											
Establishments	23	46	22	2	14	38	21	1	15	91	
Guest rooms	2 092	2 917	1 515	np	np	2 294	2 884	np	510	6 524	
Bed spaces	5 539	8 630	4 610	np	np	6 986	8 299	np	1 352	18 779	
Persons employed	1 891	948	446	np	np	748	1 917	np	195	3 285	
ROOM NIGHTS OCCUPIED ('000)											
2003											
September Quarter	141.3	187.5	89.8	np	38.3	145.5	184.3	np	20.0	418.6	
2004											
July	52.8	67.6	41.3	np	np	56.3	76.0	np	12.8	161.7	
August	52.0	63.5	40.5	np	np	53.2	74.2	np	12.3	156.0	
September	47.6	53.8	34.7	np	np	45.5	67.5	np	9.2	136.0	
September Quarter	152.3	184.9	116.5	np	np	155.0	217.8	np	34.3	453.7	
ROOM OCCUPANCY RATE (%)											
2003											
September Quarter	72.9	69.1	73.7	np	60.8	68.4	79.0	np	59.6	71.3	
2004											
July	81.4	74.8	87.9	np	np	79.2	85.0	np	80.7	79.9	
August	80.1	70.2	86.3	np	np	74.8	83.0	np	77.8	77.1	
September	75.8	61.4	76.4	np	np	66.1	78.1	np	60.4	69.5	
September Quarter	79.1	68.9	83.6	np	np	73.4	82.1	np	73.1	75.6	
GUEST NIGHTS OCCUPIED ('000)											
2003											
September Quarter	228.8	325.7	183.8	np	63.9	273.3	311.6	np	33.6	738.3	
2004											
July	86.9	123.8	84.6	np	np	113.0	130.4	np	20.5	295.4	
August	84.5	114.9	81.3	np	np	106.3	125.3	np	19.6	280.8	
September	72.6	93.3	68.6	np	np	87.8	108.3	np	14.7	234.5	
September Quarter	244.0	332.1	234.6	np	np	307.2	364.0	np	54.9	810.7	
BED OCCUPANCY RATE (%)											
2003											
September Quarter	42.4	39.5	46.6	np	35.6	40.8	43.1	np	37.1	42.0	
2004											
July	50.6	46.3	59.2	np	np	52.2	50.7	np	48.9	50.7	
August	49.2	43.0	56.9	np	np	49.1	48.7	np	46.9	48.2	
September	43.7	36.0	49.6	np	np	41.9	43.5	np	36.3	41.6	
September Quarter	47.9	41.8	55.3	np	np	47.8	47.7	np	44.1	46.9	

np not available for publication but included in totals where applicable, unless otherwise indicated

(a) Star grade classifications have been revised. See Explanatory Notes.

Period	Licensed hotels with facilities	Motels and guest houses	Serviced apartments	STAR GRADING						Ungraded	Total
				1	2	3	4	5			
GUEST ARRIVALS ('000)											
2003											
September Quarter	105.1	190.5	70.5	np	32.7	154.9	136.6	np	16.4	366.1	
2004											
July	46.9	71.0	31.2	np	np	58.1	66.9	np	9.3	149.1	
August	46.0	68.0	33.9	np	np	57.7	68.1	np	8.7	147.9	
September	40.6	53.3	27.9	np	np	46.3	57.9	np	6.3	121.8	
September Quarter	133.5	192.2	93.0	np	np	162.2	192.9	np	24.4	418.7	
AVERAGE LENGTH OF STAY (days)											
2003											
September Quarter	2.2	1.7	2.6	np	2.0	1.8	2.3	np	2.1	2.0	
2004											
July	1.9	1.7	2.7	np	np	1.9	1.9	np	2.2	2.0	
August	1.8	1.7	2.4	np	np	1.8	1.8	np	2.3	1.9	
September	1.8	1.8	2.5	np	np	1.9	1.9	np	2.3	1.9	
September Quarter	1.8	1.7	2.5	np	np	1.9	1.9	np	2.3	1.9	
TAKINGS FROM ACCOMMODATION (\$'000)											
2003											
September Quarter	19 284	19 839	12 415	np	3 142	15 900	24 923	np	1 764	51 537	
2004											
July	7 428	7 708	5 733	np	np	6 193	11 149	np	1 305	20 869	
August	7 108	7 580	5 670	np	np	6 014	10 756	np	1 327	20 357	
September	6 193	5 885	4 359	np	np	4 651	8 801	np	1 017	16 437	
September Quarter	20 729	21 173	15 762	np	np	16 858	30 706	np	3 649	57 663	
AVERAGE TAKINGS PER ROOM NIGHT OCCUPIED (\$)											
2003											
September Quarter	136.5	105.8	138.3	np	81.9	109.2	135.2	np	88.4	123.1	
2004											
July	140.7	114.0	138.9	np	np	110.0	146.7	np	102.3	129.1	
August	136.8	119.4	139.9	np	np	113.0	144.9	np	107.9	130.5	
September	130.2	109.5	125.6	np	np	102.3	130.3	np	110.0	120.8	
September Quarter	136.1	114.5	135.3	np	np	108.8	141.0	np	106.4	127.1	
AVERAGE TAKINGS PER AVAILABLE ROOM NIGHT (\$)											
2003											
September Quarter	99.4	73.1	101.9	np	49.9	74.7	106.8	np	52.7	87.8	
2004											
July	114.5	85.2	122.1	np	np	87.1	124.7	np	82.6	103.2	
August	109.6	83.8	120.7	np	np	84.6	120.3	np	83.9	100.7	
September	98.7	67.2	95.9	np	np	67.6	101.7	np	66.5	84.0	
September Quarter	107.7	78.9	113.1	np	np	79.9	115.7	np	77.8	96.1	

np not available for publication but included in totals where applicable, unless otherwise indicated

(a) Star grade classifications have been revised. See Explanatory Notes.

Period	Licensed hotels with facilities	Motels and guest houses	Serviced apartments	STAR GRADING						Total
				1	2	3	4	5	Ungraded	
ESTABLISHMENTS, CAPACITY AND EMPLOYMENT (no.)										
September Quarter 2003										
Establishments	15	26	18	1	9	17	29	1	2	59
Rooms	1 909	1 843	1 317	np	478	1 376	2 810	np	np	5 069
Bed spaces	4 592	5 249	4 365	np	1 643	4 163	7 307	np	np	14 206
Persons employed	1 683	683	458	np	119	568	1 586	np	np	2 824
September Quarter 2004										
Establishments	15	24	17	—	4	18	31	1	2	56
Rooms	1 923	1 703	1 251	—	np	1 464	2 898	np	np	4 877
Bed spaces	4 625	4 858	3 905	—	np	4 380	7 579	np	np	13 388
Persons employed	1 630	645	409	—	np	583	1 605	np	np	2 684
ROOM NIGHTS OCCUPIED ('000)										
2003										
September Quarter	128.8	106.2	87.4	np	25.3	74.3	192.9	np	np	322.4
2004										
July	41.2	31.5	30.4	—	np	25.9	66.5	np	np	103.1
August	44.4	31.5	29.7	—	np	25.6	68.1	np	np	105.6
September	45.1	33.8	28.6	—	np	26.9	69.1	np	np	107.5
September Quarter	130.7	96.8	88.7	—	np	78.4	203.7	np	np	316.2
ROOM OCCUPANCY RATE (%)										
2003										
September Quarter	73.3	62.7	73.3	np	57.5	59.6	74.6	np	np	69.4
2004										
July	69.1	59.7	78.4	—	np	57.0	74.0	np	np	68.2
August	74.4	59.6	76.6	—	np	56.5	75.8	np	np	69.8
September	78.2	66.3	76.1	—	np	61.3	79.5	np	np	73.5
September Quarter	73.9	61.8	77.0	—	np	58.2	76.4	np	np	70.5
GUEST NIGHTS OCCUPIED ('000)										
2003										
September Quarter	196.3	202.1	162.6	np	59.2	149.9	305.9	np	np	561.0
2004										
July	69.2	64.1	56.3	—	np	59.2	113.0	np	np	189.6
August	63.5	59.5	48.9	—	np	55.6	99.3	np	np	171.9
September	67.4	65.3	51.7	—	np	59.0	108.0	np	np	184.4
September Quarter	200.1	188.9	156.9	—	np	173.9	320.2	np	np	545.9
BED OCCUPANCY RATE (%)										
2003										
September Quarter	46.5	41.9	42.2	np	39.1	40.9	45.5	np	np	43.5
2004										
July	48.2	42.6	46.5	—	np	43.6	48.1	np	np	45.7
August	44.3	39.5	40.4	—	np	41.0	42.3	np	np	41.4
September	48.6	44.8	44.1	—	np	44.9	47.5	np	np	45.9
September Quarter	47.0	42.3	43.7	—	np	43.2	45.9	np	np	44.3

— nil or rounded to zero (including null cells)

(a) Star grade classifications have been revised. See Explanatory Notes.

np not available for publication but included in totals where applicable, unless otherwise indicated

Period	Licensed hotels with facilities	Motels and guest houses	Serviced apartments	STAR GRADING						Total
				1	2	3	4	5	Ungraded	
GUEST ARRIVALS ('000)										
2003										
September Quarter	88.6	98.0	44.6	np	26.8	50.2	133.3	np	np	231.2
2004										
July	30.0	31.7	14.1	—	np	20.6	46.8	np	np	75.8
August	30.7	29.0	13.5	—	np	19.8	44.6	np	np	73.1
September	32.3	30.8	13.3	—	np	20.5	46.5	np	np	76.4
September Quarter	93.0	91.5	40.8	—	np	60.9	137.9	np	np	225.3
AVERAGE LENGTH OF STAY (days)										
2003										
September Quarter	2.2	2.1	3.6	np	2.2	3.0	2.3	np	np	2.4
2004										
July	2.3	2.0	4.0	—	np	2.9	2.4	np	np	2.5
August	2.1	2.1	3.6	—	np	2.8	2.2	np	np	2.3
September	2.1	2.1	3.9	—	np	2.9	2.3	np	np	2.4
September Quarter	2.2	2.1	3.8	—	np	2.9	2.3	np	np	2.4
TAKINGS FROM ACCOMMODATION (\$'000)										
2003										
September Quarter	16 646	8 947	11 169	np	1 823	5 999	24 595	np	np	36 762
2004										
July	5 006	2 842	3 819	—	np	2 211	8 098	np	np	11 668
August	5 769	2 832	3 868	—	np	2 242	8 508	np	np	12 469
September	5 776	3 024	3 893	—	np	2 362	8 726	np	np	12 693
September Quarter	16 551	8 698	11 580	—	np	6 815	25 332	np	np	36 829
AVERAGE TAKINGS PER ROOM NIGHT OCCUPIED (\$)										
2003										
September Quarter	129.3	84.2	127.8	np	72.1	80.7	127.5	np	np	114.0
2004										
July	121.5	90.2	125.7	—	np	85.4	121.8	np	np	113.2
August	130.0	89.9	130.2	—	np	87.5	125.0	np	np	118.1
September	128.0	89.3	136.4	—	np	87.7	126.3	np	np	118.0
September Quarter	126.6	89.8	130.6	—	np	86.9	124.4	np	np	116.5
AVERAGE TAKINGS PER AVAILABLE ROOM NIGHT (\$)										
2003										
September Quarter	94.8	52.8	93.7	np	41.5	48.1	95.1	np	np	79.2
2004										
July	84.0	53.8	98.5	—	np	48.7	90.1	np	np	77.2
August	96.8	53.6	99.7	—	np	49.4	94.7	np	np	82.5
September	100.1	59.2	103.7	—	np	53.8	100.4	np	np	86.8
September Quarter	93.6	55.5	100.6	—	np	50.6	95.0	np	np	82.1

— nil or rounded to zero (including null cells)

(a) Star grade classifications have been revised. See Explanatory Notes.

np not available for publication but included in totals where applicable, unless otherwise indicated

Period	South Coast	Illawarra	Sydney	Snowy Mountains	Capital Country	The Murray	Riverina	Explorer Country
--------	-------------	-----------	--------	-----------------	-----------------	------------	----------	------------------

ESTABLISHMENTS, CAPACITY AND EMPLOYMENT (no.)

September Quarter 2004

Establishments	81	35	293	67	65	98	63	125
Rooms	1 999	1 225	30 726	2 548	2 130	2 842	1 813	3 553
Bed spaces	5 990	3 565	75 773	9 557	6 007	8 562	5 218	10 557
Persons employed	664	598	18 814	1 041	847	926	547	1 210

ROOM NIGHTS OCCUPIED ('000)

2004

July	23.5	23.3	695.8	58.4	34.5	36.3	28.2	59.8
August	21.8	18.0	708.3	56.9	33.6	38.1	28.8	55.7
September	26.6	18.8	683.9	42.1	36.5	46.2	34.2	67.3
September Quarter	72.0	60.1	2 088.0	157.5	104.6	120.6	91.2	182.8

ROOM OCCUPANCY RATE (%)

2004

July	38.0	61.3	73.2	73.9	52.2	41.2	50.1	54.3
August	35.6	47.4	74.4	72.1	50.9	43.2	51.3	50.6
September	44.4	51.2	74.3	55.1	57.2	54.2	63.0	63.1
September Quarter	39.3	53.3	73.9	67.2	53.4	46.1	54.7	55.9

GUEST NIGHTS OCCUPIED ('000)

2004

July	45.4	44.2	1 186.5	168.9	64.3	67.9	45.9	111.5
August	38.5	28.8	1 150.8	163.8	59.3	67.8	43.5	92.4
September	47.9	30.4	1 126.3	112.3	66.2	85.8	55.2	123.8
September Quarter	131.8	103.4	3 463.6	445.0	189.8	221.4	144.6	327.7

GUEST ARRIVALS ('000)

2004

July	25.5	19.3	482.7	60.8	45.9	41.5	34.5	78.2
August	22.4	15.8	477.0	60.0	43.1	41.0	32.2	64.6
September	26.8	16.9	464.2	40.5	46.5	47.8	38.3	84.8
September Quarter	74.6	51.9	1 423.9	161.3	135.4	130.3	105.1	227.6

TAKINGS FROM ACCOMMODATION (\$'000)

2004

July	2 013	2 776	100 414	13 298	3 527	2 987	2 462	5 164
August	1 827	2 073	105 771	14 439	3 346	3 105	2 480	4 793
September	2 289	2 309	101 341	7 014	3 625	3 916	3 020	5 820
September Quarter	6 128	7 157	307 527	34 751	10 499	10 008	7 963	15 777

Period	Hunter	North Coast NSW	Northern Rivers Tropical NSW	New England North West	Outback NSW	Central Coast	Blue Mountains
--------	--------	-----------------------	---------------------------------------	---------------------------------	----------------	------------------	-------------------

ESTABLISHMENTS, CAPACITY AND EMPLOYMENT (no.)

September Quarter 2004

Establishments	81	157	79	89	45	41	33
Rooms	3 375	5 344	2 283	2 557	1 170	1 570	1 332
Bed spaces	10 139	17 589	7 159	7 616	3 307	4 769	3 395
Persons employed	1 907	2 334	665	817	357	723	740

ROOM NIGHTS OCCUPIED ('000)

2004

July	55.4	83.2	39.4	38.9	19.1	22.5	25.0
August	54.9	74.3	36.4	37.7	19.2	20.0	18.4
September	55.4	89.0	40.0	42.2	21.0	23.9	20.2
September Quarter	165.7	246.5	115.8	118.9	59.3	66.3	63.5

ROOM OCCUPANCY RATE (%)

2004

July	52.9	50.2	55.7	49.1	52.7	46.1	60.5
August	52.5	44.9	51.4	48.5	52.9	41.0	44.5
September	54.7	55.5	58.4	55.0	59.9	50.7	50.4
September Quarter	53.4	50.1	55.1	50.9	55.1	45.9	51.8

GUEST NIGHTS OCCUPIED ('000)

2004

July	97.9	177.0	79.5	74.0	32.7	45.7	50.4
August	91.1	143.0	66.7	61.9	30.3	35.6	34.4
September	94.8	184.1	79.0	73.5	34.4	45.8	38.4
September Quarter	283.8	504.2	225.1	209.4	97.4	127.1	123.2

GUEST ARRIVALS ('000)

2004

July	54.6	101.2	43.5	50.3	20.5	25.3	31.0
August	51.6	82.7	37.0	42.2	17.9	20.5	21.1
September	53.7	103.4	43.5	51.2	19.6	25.1	23.6
September Quarter	159.9	287.3	124.0	143.7	58.0	70.8	75.7

TAKINGS FROM ACCOMMODATION (\$'000)

2004

July	6 708	7 923	3 918	3 188	1 329	2 735	3 760
August	6 508	7 015	3 496	3 041	1 366	2 382	2 571
September	6 689	8 917	4 041	3 380	1 475	2 727	2 640
September Quarter	19 905	23 855	11 456	9 609	4 170	7 844	8 970

Period	Melbourne	Wimmera	Mallee	Western Western	Western Grampians	Bendigo Loddon	Peninsula	Central Murray	Goulburn	High Country	Lakes
ESTABLISHMENTS, CAPACITY AND EMPLOYMENT (no.)											
September Quarter 2004											
Establishments	268	6	42	54	20	31	22	20	29	72	21
Rooms	21 812	115	1 294	1 426	493	804	750	550	798	1 870	571
Bed spaces	54 922	367	3 724	4 515	1 445	2 381	2 067	1 545	2 349	6 741	1 721
Persons employed	15 681	20	403	693	221	357	327	154	426	912	219
ROOM NIGHTS OCCUPIED ('000)											
2004											
July	469.6	1.0	20.0	18.2	7.3	15.2	7.8	7.2	11.0	34.2	5.8
August	457.8	0.9	18.0	18.3	7.5	12.7	7.3	6.6	10.7	32.7	6.4
September	456.6	1.3	22.3	20.9	7.6	13.7	7.8	7.9	11.7	27.0	7.3
September Quarter	1 384.0	3.3	60.3	57.5	22.3	41.5	22.9	21.7	33.4	93.9	19.6
ROOM OCCUPANCY RATE (%)											
2004											
July	69.5	29.4	49.7	41.2	47.6	60.9	33.5	42.2	44.5	59.8	33.0
August	67.7	26.1	45.0	41.5	48.8	50.8	31.3	38.6	43.4	57.2	36.2
September	69.8	38.9	57.4	48.8	51.1	56.7	34.7	47.7	48.7	48.7	43.8
September Quarter	69.0	31.4	50.6	43.8	49.1	56.2	33.2	42.8	45.5	55.3	37.5
GUEST NIGHTS OCCUPIED ('000)											
2004											
July	783.3	1.8	33.7	37.3	11.4	26.7	13.6	12.9	17.2	93.8	9.9
August	734.9	1.4	27.9	32.1	11.1	20.0	12.1	11.2	16.1	88.3	10.0
September	739.1	2.3	38.2	39.1	11.9	22.8	13.7	13.7	17.7	69.7	13.6
September Quarter	2 257.3	5.5	99.8	108.5	34.3	69.6	39.5	37.8	51.0	251.8	33.5
GUEST ARRIVALS ('000)											
2004											
July	330.9	1.1	20.8	24.3	9.4	15.0	7.3	8.6	11.1	39.1	7.4
August	310.2	0.9	18.4	21.6	8.9	12.4	6.5	7.7	10.8	39.6	6.9
September	315.2	1.4	23.2	25.2	10.0	15.0	7.3	9.7	12.3	31.1	8.9
September Quarter	956.3	3.4	62.5	71.1	28.3	42.5	21.1	26.0	34.2	109.8	23.2
TAKINGS FROM ACCOMMODATION (\$'000)											
2004											
July	63 532	66	1 678	1 784	633	1 482	877	574	980	7 191	509
August	62 365	59	1 470	1 768	654	1 215	812	519	931	7 542	520
September	63 585	88	1 853	2 093	656	1 287	857	637	998	3 829	610
September Quarter	189 482	213	5 001	5 644	1 942	3 985	2 546	1 731	2 909	18 563	1 639

Period	Gippsland	Melbourne East	Geelong	Macedon	Spa Country	Ballarat	Central Highlands	Upper Yarra	Murray East	Phillip Island
ESTABLISHMENTS, CAPACITY AND EMPLOYMENT (no.)										
September Quarter 2004										
Establishments	33	14	25	5	4	23	13	11	16	10
Rooms	1 000	499	839	123	97	767	311	385	463	332
Bed spaces	2 776	1 299	2 366	318	351	2 444	934	983	1 203	1 114
Persons employed	275	601	485	85	120	359	78	206	100	133
ROOM NIGHTS OCCUPIED ('000)										
2004										
July	10.8	4.8	12.5	1.7	1.5	11.7	3.2	3.5	4.7	3.2
August	11.0	4.7	11.8	1.5	1.3	10.7	2.9	2.9	4.5	3.0
September	11.4	5.4	12.7	1.6	1.4	11.8	4.1	2.9	6.1	4.2
September Quarter	33.1	14.8	37.0	4.8	4.1	34.2	10.2	9.2	15.2	10.3
ROOM OCCUPANCY RATE (%)										
2004										
July	34.8	30.7	48.2	44.7	48.6	49.1	32.8	29.1	32.4	30.6
August	35.4	30.5	45.4	40.5	42.7	45.0	30.3	24.4	31.3	28.8
September	37.9	35.7	50.3	42.4	48.1	51.1	44.3	24.8	43.6	42.2
September Quarter	36.0	32.3	47.9	42.5	46.5	48.4	35.7	26.1	35.7	33.8
GUEST NIGHTS OCCUPIED ('000)										
2004										
July	16.2	7.2	21.1	1.9	2.6	23.2	6.0	6.0	7.8	7.5
August	15.7	7.0	18.4	1.8	2.2	19.9	5.1	4.9	6.8	6.0
September	16.7	8.0	20.2	1.8	2.5	24.5	8.6	4.4	10.1	9.8
September Quarter	48.6	22.2	59.6	5.5	7.2	67.6	19.6	15.3	24.7	23.3
GUEST ARRIVALS ('000)										
2004										
July	10.6	4.1	11.9	1.1	1.4	13.8	4.0	3.5	5.4	4.8
August	10.8	4.0	11.1	1.1	1.3	10.9	3.8	2.8	4.6	4.0
September	10.9	4.2	11.7	1.1	1.4	13.8	5.4	2.5	6.3	5.7
September Quarter	32.3	12.2	34.7	3.3	4.2	38.5	13.2	8.7	16.2	14.5
TAKINGS FROM ACCOMMODATION (\$'000)										
2004										
July	845	645	1 322	234	317	1 121	251	370	360	338
August	886	617	1 206	221	274	978	237	300	341	304
September	930	725	1 333	219	319	1 115	342	312	440	457
September Quarter	2 661	1 987	3 861	674	910	3 213	830	983	1 141	1 098

<i>Period</i>	<i>Gold Coast</i>	<i>Brisbane</i>	<i>Sunshine Coast</i>	<i>Hervey Bay/Maryborough</i>	<i>Darling Downs</i>	<i>Bundaberg</i>	<i>Fitzroy</i>
ESTABLISHMENTS, CAPACITY AND EMPLOYMENT (no.)							
September Quarter 2004							
Establishments	154	161	104	50	65	29	88
Rooms	13 174	9 841	4 906	1 892	1 655	771	3 292
Bed spaces	42 223	28 258	16 922	6 101	5 071	2 417	10 121
Persons employed	8 562	6 643	2 162	824	608	288	1 619
ROOM NIGHTS OCCUPIED ('000)							
2004							
July	285.0	244.4	97.5	35.4	32.4	13.6	65.9
August	286.1	257.3	103.0	36.8	30.4	13.5	63.9
September	289.5	246.5	110.0	36.9	34.1	15.1	67.5
<i>September Quarter</i>	860.6	748.2	310.6	109.1	96.8	42.2	197.3
ROOM OCCUPANCY RATE (%)							
2004							
July	69.8	80.1	64.1	60.4	63.1	56.9	64.6
August	70.0	84.4	67.8	62.7	59.2	56.3	62.6
September	73.2	83.5	74.9	65.1	68.6	65.4	68.4
<i>September Quarter</i>	71.0	82.6	68.9	62.7	63.6	59.5	65.1
GUEST NIGHTS OCCUPIED ('000)							
2004							
July	675.0	400.8	245.3	69.1	57.8	24.3	109.8
August	638.1	410.4	240.0	68.1	52.1	22.8	99.9
September	698.7	401.0	297.3	75.2	61.1	27.3	114.5
<i>September Quarter</i>	2 011.8	1 212.2	782.5	212.4	171.0	74.4	324.2
GUEST ARRIVALS ('000)							
2004							
July	193.2	187.1	70.2	33.3	38.7	15.3	57.3
August	179.4	191.0	67.6	32.8	36.0	15.1	51.9
September	192.6	184.8	76.9	35.0	40.4	16.9	56.2
<i>September Quarter</i>	565.2	563.0	214.6	101.0	115.1	47.3	165.5
TAKINGS FROM ACCOMMODATION (\$'000)							
2004							
July	31 453	28 817	11 216	2 891	2 621	1 230	6 181
August	32 184	31 623	12 316	3 138	2 474	1 166	5 606
September	34 290	29 705	14 978	3 487	2 839	1 357	6 111
<i>September Quarter</i>	97 927	90 145	38 510	9 515	7 934	3 753	17 897

<i>Period</i>	<i>Mackay</i>	<i>Whitsundays</i>	<i>Northern</i>	<i>Tropical North Queensland</i>	<i>Outback</i>	<i>Great Barrier Reef(a)</i>
ESTABLISHMENTS, CAPACITY AND EMPLOYMENT (no.)						
September Quarter 2004						
Establishments	54	30	50	176	55	18
Rooms	1 763	2 569	2 321	11 513	1 495	2 623
Bed spaces	5 451	8 795	6 552	32 988	4 279	8 922
Persons employed	1 023	2 341	1 209	6 050	553	2 795
ROOM NIGHTS OCCUPIED ('000)						
2004						
July	36.9	51.4	59.2	276.6	28.2	51.9
August	36.0	52.9	55.0	274.7	29.8	48.9
September	36.3	58.0	50.1	246.5	25.8	56.3
<i>September Quarter</i>	109.2	162.3	164.3	797.8	83.8	157.1
ROOM OCCUPANCY RATE (%)						
2004						
July	67.5	64.6	82.3	78.4	60.8	63.8
August	66.0	66.4	76.4	77.4	64.3	60.1
September	68.6	75.2	72.0	71.4	57.6	71.6
<i>September Quarter</i>	67.4	68.7	76.9	75.8	60.9	65.1
GUEST NIGHTS OCCUPIED ('000)						
2004						
July	62.6	120.5	94.9	588.8	44.9	123.6
August	58.0	116.1	80.3	573.0	44.0	110.2
September	62.5	137.9	77.2	511.8	40.3	135.8
<i>September Quarter</i>	183.1	374.6	252.4	1 673.6	129.1	369.7
GUEST ARRIVALS ('000)						
2004						
July	28.8	38.2	42.6	176.6	28.8	30.5
August	27.4	36.8	40.6	170.5	27.6	28.5
September	28.0	41.8	38.2	156.4	26.0	34.1
<i>September Quarter</i>	84.2	116.9	121.3	503.5	82.4	93.2
TAKINGS FROM ACCOMMODATION (\$'000)						
2004						
July	3 911	8 480	5 770	38 309	2 340	11 510
August	3 579	9 486	5 407	38 799	2 410	12 015
September	3 893	10 602	4 861	34 061	2 139	12 783
<i>September Quarter</i>	11 383	28 568	16 039	111 169	6 890	36 309

(a) Includes those parts of other Tourism Regions which fall within the Great Barrier Reef geographic area. Data are not included in Queensland totals.

<i>Period</i>	<i>Limestone Coast</i>	<i>Murraylands</i>	<i>Fleurieu Peninsula</i>	<i>Adelaide</i>	<i>Adelaide Hills</i>	<i>Barossa</i>	<i>Riverland</i>
ESTABLISHMENTS, CAPACITY AND EMPLOYMENT (no.)							
September Quarter 2004							
Establishments	34	4	12	96	4	9	14
Rooms	980	97	428	6 744	131	362	499
Bed spaces	2 893	295	1 318	18 438	378	1 000	1 509
Persons employed	437	52	280	3 971	127	326	545
ROOM NIGHTS OCCUPIED ('000)							
2004							
July	12.8	1.7	4.6	120.6	2.0	6.4	7.0
August	13.0	1.4	4.7	126.4	1.9	5.3	7.0
September	14.8	1.6	5.2	135.5	2.0	5.9	9.2
<i>September Quarter</i>	40.5	4.7	14.5	382.5	6.0	17.6	23.1
ROOM OCCUPANCY RATE (%)							
2004							
July	42.0	56.2	34.9	57.7	50.2	57.4	45.0
August	42.7	46.7	35.6	60.5	47.6	47.4	45.1
September	50.3	55.1	40.3	67.0	50.3	53.9	61.2
<i>September Quarter</i>	45.0	52.6	36.9	61.7	49.4	52.9	50.3
GUEST NIGHTS OCCUPIED ('000)							
2004							
July	19.7	2.8	10.0	199.3	4.2	11.3	11.6
August	18.8	2.4	9.5	196.8	3.4	9.0	10.8
September	22.6	2.9	11.1	219.1	3.9	10.5	15.5
<i>September Quarter</i>	61.2	8.1	30.6	615.1	11.5	30.8	37.8
GUEST ARRIVALS ('000)							
2004							
July	12.6	1.7	5.7	86.0	2.0	6.6	7.8
August	12.2	1.7	5.5	85.5	1.7	5.8	6.8
September	14.8	1.9	6.5	92.3	1.9	6.6	9.4
<i>September Quarter</i>	39.6	5.3	17.7	263.8	5.6	18.9	24.0
TAKINGS FROM ACCOMMODATION (\$'000)							
2004							
July	1 005	124	436	13 711	199	654	522
August	986	108	399	14 554	192	580	496
September	1 172	119	427	15 865	198	594	689
<i>September Quarter</i>	3 163	351	1 262	44 130	590	1 827	1 708

<i>Period</i>	<i>Clare Valley</i>	<i>Flinders Ranges</i>	<i>Outback SA</i>	<i>Eyre Peninsula</i>	<i>Yorke Peninsula</i>	<i>Kangaroo Island</i>
---------------	---------------------	------------------------	-------------------	-----------------------	------------------------	------------------------

ESTABLISHMENTS, CAPACITY AND EMPLOYMENT (no.)

September Quarter 2004

Establishments	4	20	9	25	8	6
Rooms	128	725	650	798	149	195
Bed spaces	401	2 214	1 560	2 265	464	507
Persons employed	88	315	199	597	73	129

ROOM NIGHTS OCCUPIED ('000)

2004

July	2.2	11.2	6.2	13.0	1.2	2.1
August	2.1	12.1	7.5	14.4	1.6	2.6
September	2.5	13.6	7.2	13.8	1.4	3.4
September Quarter	6.7	36.9	21.0	41.1	4.2	8.1

ROOM OCCUPANCY RATE (%)

2004

July	55.2	49.7	30.9	52.3	25.9	35.3
August	51.7	53.8	37.4	58.2	35.3	42.8
September	65.2	62.6	37.1	57.5	31.6	57.7
September Quarter	57.3	55.3	35.1	56.0	30.9	45.1

GUEST NIGHTS OCCUPIED ('000)

2004

July	4.0	19.0	10.8	17.5	1.6	4.0
August	3.6	19.0	11.7	19.0	2.1	4.6
September	4.6	23.4	11.0	19.5	2.0	6.5
September Quarter	12.1	61.4	33.5	56.0	5.7	15.1

GUEST ARRIVALS ('000)

2004

July	2.9	12.7	6.9	9.4	1.2	1.7
August	2.7	12.7	6.5	11.4	1.3	2.2
September	3.4	15.2	5.6	12.0	1.3	2.6
September Quarter	9.0	40.6	19.1	32.9	3.9	6.5

TAKINGS FROM ACCOMMODATION (\$'000)

2004

July	222	901	561	918	81	214
August	204	966	676	1 076	100	247
September	249	1 129	647	1 020	96	344
September Quarter	675	2 996	1 883	3 013	276	804

<i>Period</i>	<i>Australia's Coral Coast</i>	<i>Australia's North West</i>	<i>Australia's South West</i>	<i>Experience Perth</i>	<i>Australia's Golden Outback</i>
---------------	--	---------------------------------------	---------------------------------------	-----------------------------	---

ESTABLISHMENTS, CAPACITY AND EMPLOYMENT (no.)

September Quarter 2004

Establishments	33	49	84	120	54
Rooms	1 438	3 211	3 324	10 469	1 933
Bed spaces	4 276	7 589	10 378	28 997	5 065
Persons employed	559	1 377	1 405	5 727	749

ROOM NIGHTS OCCUPIED ('000)

2004

July	28.1	72.5	41.3	201.8	30.3
August	28.4	74.2	38.1	197.0	30.4
September	29.1	67.4	47.4	214.5	35.1
<i>September Quarter</i>	<i>85.6</i>	<i>214.1</i>	<i>126.8</i>	<i>613.2</i>	<i>95.9</i>

ROOM OCCUPANCY RATE (%)

2004

July	62.9	72.8	41.1	62.2	50.5
August	63.7	74.6	37.0	60.8	50.8
September	67.5	70.0	47.5	68.4	60.6
<i>September Quarter</i>	<i>64.7</i>	<i>72.5</i>	<i>41.8</i>	<i>63.8</i>	<i>53.9</i>

GUEST NIGHTS OCCUPIED ('000)

2004

July	49.2	127.1	84.2	363.3	41.7
August	46.5	122.6	69.3	332.7	41.7
September	48.2	109.5	86.7	367.4	51.9
<i>September Quarter</i>	<i>143.9</i>	<i>359.2</i>	<i>240.2</i>	<i>1 063.4</i>	<i>135.2</i>

GUEST ARRIVALS ('000)

2004

July	27.9	43.7	40.3	144.0	20.8
August	25.4	43.5	36.1	132.1	22.5
September	28.9	37.8	45.6	146.1	28.9
<i>September Quarter</i>	<i>82.3</i>	<i>125.1</i>	<i>122.0</i>	<i>422.2</i>	<i>72.2</i>

TAKINGS FROM ACCOMMODATION (\$'000)

2004

July	2 505	9 277	4 151	22 385	2 667
August	2 559	9 569	4 035	21 982	2 473
September	2 603	8 512	4 953	25 633	2 962
<i>September Quarter</i>	<i>7 667</i>	<i>27 358</i>	<i>13 140</i>	<i>69 999</i>	<i>8 102</i>

<i>Period</i>	<i>Greater Hobart</i>	<i>Southern</i>	<i>East Coast</i>	<i>Northern</i>	<i>Greater Launceston</i>	<i>North West</i>	<i>West Coast</i>
---------------	-----------------------	-----------------	-------------------	-----------------	---------------------------	-------------------	-------------------

ESTABLISHMENTS, CAPACITY AND EMPLOYMENT (no.)

September Quarter 2004

Establishments	46	6	13	4	33	33	11
Rooms	2 398	155	511	119	1 482	1 084	461
Bed spaces	6 367	486	1 761	429	4 666	3 230	1 271
Persons employed	1 835	69	268	54	1 200	562	206

ROOM NIGHTS OCCUPIED ('000)

2004

July	37.0	1.3	3.7	1.7	21.2	10.8	1.9
August	36.7	1.0	4.3	1.6	20.6	10.6	2.2
September	41.8	1.9	5.2	2.3	24.7	13.2	3.6
September Quarter	115.5	4.2	13.1	5.6	66.5	34.6	7.7

ROOM OCCUPANCY RATE (%)

2004

July	49.8	26.9	23.6	45.0	46.1	32.3	13.3
August	49.4	21.7	26.8	42.4	44.9	31.5	15.7
September	58.0	40.6	33.7	65.2	55.7	40.5	26.4
September Quarter	52.4	29.6	28.0	50.7	48.8	34.7	18.4

GUEST NIGHTS OCCUPIED ('000)

2004

July	65.5	2.8	6.9	3.4	37.1	17.4	3.6
August	62.2	2.1	8.4	2.8	34.4	15.9	3.5
September	74.8	3.9	10.3	5.5	47.9	22.3	7.1
September Quarter	202.4	8.8	25.7	11.7	119.4	55.6	14.2

GUEST ARRIVALS ('000)

2004

July	29.4	2.1	5.2	1.8	18.5	12.0	2.2
August	29.3	1.8	6.4	1.4	17.6	10.8	2.3
September	34.9	3.3	7.2	2.8	23.3	15.4	4.1
September Quarter	93.7	7.2	18.8	6.0	59.4	38.2	8.7

TAKINGS FROM ACCOMMODATION (\$'000)

2004

July	4 171	112	320	135	2 122	1 128	181
August	4 081	95	407	147	2 056	1 048	204
September	4 632	173	460	210	2 565	1 316	355
September Quarter	12 884	380	1 187	493	6 743	3 491	740

.....

<i>Period</i>	<i>Darwin</i>	<i>Kakadu</i>	<i>Arnhem</i>	<i>Katherine</i>	<i>Tablelands</i>	<i>Petermann</i>	<i>Alice Springs</i>	<i>Canberra</i>
---------------	---------------	---------------	---------------	------------------	-------------------	------------------	----------------------	-----------------

.....

ESTABLISHMENTS, CAPACITY AND EMPLOYMENT (no.)

September Quarter 2004

Establishments	36	5	3	10	7	7	23	56
Rooms	2 771	352	83	561	np	np	1 700	4 877
Bed spaces	7 697	1 167	280	1 577	np	np	5 292	13 388
Persons employed	1 505	216	49	189	np	np	810	2 684

.....

ROOM NIGHTS OCCUPIED ('000)

2004

July	79.7	8.3	1.5	13.7	np	np	37.6	103.1
August	78.7	8.2	1.7	13.0	np	np	33.2	105.6
September	65.5	6.7	1.5	10.3	np	np	32.7	107.5
September Quarter	223.9	23.2	4.7	37.0	np	np	103.5	316.2

.....

ROOM OCCUPANCY RATE (%)

2004

July	92.8	76.1	57.3	78.6	np	np	71.3	68.2
August	91.6	74.9	65.1	75.0	np	np	63.0	69.8
September	78.8	63.9	61.4	61.2	np	np	64.1	73.5
September Quarter	87.8	71.7	61.2	71.7	np	np	66.2	70.5

.....

GUEST NIGHTS OCCUPIED ('000)

2004

July	137.5	17.3	2.5	26.1	np	np	68.0	189.6
August	134.2	16.5	2.7	27.2	np	np	58.0	171.9
September	105.2	12.7	2.4	18.8	np	np	56.0	184.4
September Quarter	376.8	46.5	7.5	72.1	np	np	182.0	545.9

.....

GUEST ARRIVALS ('000)

2004

July	58.1	11.7	1.0	16.3	np	np	34.6	75.8
August	60.4	11.3	1.1	16.4	np	np	31.0	73.1
September	48.9	8.5	0.9	12.3	np	np	28.7	76.4
September Quarter	167.4	31.4	3.0	45.0	np	np	94.2	225.3

.....

TAKINGS FROM ACCOMMODATION (\$'000)

2004

July	10 642	1 143	388	1 050	np	np	3 404	11 668
August	10 309	1 153	384	1 050	np	np	2 964	12 469
September	7 692	860	346	716	np	np	2 903	12 693
September Quarter	28 644	3 156	1 118	2 816	np	np	9 271	36 829

.....

np not available for publication but included in totals where applicable, unless otherwise indicated

(a) The Tourism Regions of Daly and Macdonnell do not appear in this table as there are no establishments in-scope of the collection in these regions.

EXPLANATORY NOTES

- INTRODUCTION**
- 1** This publication presents data from the quarterly Survey of Tourist Accommodation (STA). The STA is a mailout collection that completely enumerates all in-scope accommodation establishments within Australia.
- SCOPE**
- 2** On a quarterly basis the STA includes licensed hotels with facilities, motels, guest houses and serviced apartments with 15 or more rooms or units.
- 3** Short-term non-residential accommodation, which is in scope of the STA, is accommodation which is not leased, and which is provided to guests who would generally stay for periods of less than two months.
- 4** Some establishments also provide long-term residential accommodation. For licensed hotels with facilities, motels, guest houses and serviced apartments, the amount of such activity is considered to be insignificant and is included in the data presented in this publication.
- DEFINITIONS OF ACCOMMODATION ESTABLISHMENTS**
- 5** For 2004 the STA includes the following categories of establishments which provide predominantly short-term non-residential accommodation to the general public:
- licensed hotels and resorts with facilities – establishments with 15 or more rooms which are licensed to operate a public bar and which provide accommodation on a room/suite basis, with a bath/shower and toilet in most guest rooms, but which do not have full cooking facilities (i.e. hot plates and oven/microwave) in most guest rooms
 - motels, private hotels and guest houses with facilities – establishments with 15 or more rooms which are not licensed to operate a public bar, and which provide accommodation on a room/suite basis, with a bath/shower and toilet in most guest rooms, but which do not have full cooking facilities (i.e. hot plates and oven/microwave) in most guest rooms
 - serviced apartments – establishments with 15 or more units which mostly comprise self-contained units at the same location, and which are available on a unit/apartment basis to the general public for a minimum of one night. The units should have full cooking facilities (i.e. hot plates and oven/microwave), refrigerator and bath/shower and toilet facilities; all bed linen and towels should be provided, and daily servicing (i.e. cleaning and bed making) must be available through the on-site management, although this service may not necessarily be used.
- COVERAGE**
- 6** The main source of coverage is from the Australian Automobile Association through AAA Tourism Pty Ltd. This is supplemented by notification of new tourism developments and their likely opening dates in selected guides, major tourism journals and periodicals and newspapers. Periodic comparison with lists of accommodation establishments provided by the various tourism commissions and industry associations is also undertaken.
- STAR GRADING**
- 7** Star grade classifications of establishments were revised by AAA Tourism Pty Ltd. These changes were implemented for the STA in the March quarter 2004 and should be taken into account when making comparisons with previous quarters.
- DATA QUALITY**
- 8** The survey does not have a sample component and the data are not subject to sampling variability. However, other inaccuracies collectively referred to as non-sampling error may affect the data. These non-sampling errors may arise from a number of sources, including:
- errors in the reporting of data by providers
 - errors in the process of capturing data
 - estimation for missing data
 - definition and classification errors
 - incomplete coverage.

EXPLANATORY NOTES *continued*

DATA QUALITY *continued*

9 Every effort has been made to reduce non-sampling error to a minimum by careful design and testing of questionnaires, and efficient operating procedures and systems used to compile statistics.

10 The September quarter 2004 response rates were:

- 94% licensed hotels with facilities
- 93% motels and guest houses
- 94% serviced apartments.

BREAK IN TIME SERIES

11 In the June quarter 2003 the ABS identified 132 licensed hotels with facilities, motels and guest houses and serviced apartments which had been operating for a number of quarters but were not on the STA frame. These additional establishments were included in the STA from the June quarter 2003.

12 The addition of the 132 tourism establishments resulted in a break in time series between the March and June quarters 2003. The impact of the break in time series is explained in Appendix 1, *Tourist Accommodation, Australia* (cat. no. 8635.0), December quarter 2003. Particular care needs to be taken for all calculations of percentage changes that cross the break in series.

TAKINGS FROM ACCOMMODATION

13 From 1 July 2000, takings from accommodation include gross revenue from the provision of accommodation, including GST. Takings from meals are excluded. Where businesses are unable to provide the data inclusive of GST, it is automatically adjusted by the ABS prior to aggregation and release in output.

STATISTICAL GEOGRAPHY

14 Small area statistics for 2004 are classified to the *Australian Standard Geographical Classification (ASGC), 2003 Edition* (cat. no. 1216.0). Data are coded to the statistical local area (SLA) level.

15 These SLA data are aggregated to tourism regions as defined by relevant state and territory tourist commissions. Tourism regions are reviewed annually and are subject to boundary and name changes. Where changes have occurred care should be taken when making comparisons with previously published data at this level. This publication no longer presents comparative tourism region data for the same quarter of the previous year.

16 Details of SLAs, the composition of tourism regions, major changes to tourism regions and outline maps of tourism regions are provided on the Tourism Theme Page of the ABS web site <www.abs.gov.au>.

SEASONAL ADJUSTMENT

17 Seasonal adjustment is a means of removing the estimated effects of normal seasonal variation from the original time series so that the effect of other influences on the series may be more clearly recognised. Seasonal adjustment procedures do not aim to remove the irregular or non-seasonal influences which may be present in any particular month. Irregular influences that are highly volatile can make it difficult to interpret the movement of the series even after adjustment for seasonal variation, and cannot be assumed to indicate changes in the trend.

18 The way in which seasonally adjusted and trend estimates were calculated changed from a Forward Factor methodology to a Concurrent methodology in March quarter 2003. The Forward Factor method relied on an annual analysis of the original time series to estimate seasonal factors that were to be applied in the forthcoming four quarters. Under this method the projected seasonal factors, or forward factors, were not updated until the next annual analysis. The Concurrent methodology uses the most up to date original time series available at each reference period to estimate seasonal factors thus eliminating the need to use projected seasonal factors.

EXPLANATORY NOTES *continued*

TREND ESTIMATES

19 Smoothing the seasonally adjusted series reduces the impact of the irregular component of the seasonally adjusted series and creates the trend estimates. The trend estimates are derived by applying a 7-term Henderson moving average to the quarterly seasonally adjusted series. The Henderson moving average used in the middle of the time series is symmetric but, as the end of a time series is approached, asymmetric forms of the symmetric moving average are applied. Unlike the weights of the standard 7-term Henderson moving average, the weights used with the quarterly data have been tailored to suit the particular characteristics of individual series.

20 While these techniques enable trend estimates for the latest period to be produced, the process does result in revisions to the trend estimates in recent months, particularly as additional original estimates become available. For further information refer to *Information Paper: A Guide to Interpreting Time Series - Monitoring Trends, 2003* (cat. no. 1349.0) available at the ABS web site <www.abs.gov.au>.

EFFECTS OF ROUNDING

21 Where figures have been rounded, discrepancies may occur between totals and the sum of the component items.

RELATED PUBLICATIONS

22 Other ABS publications and products which may be of interest are outlined below. Please note, older publications may no longer be available through ABS bookshops but are available through ABS libraries. All publications released from 1998 onwards are available on the ABS web site <www.abs.gov.au> (charges apply).

Tourist Accommodation, Small Area Data cat. no. 8635.1.55.001–8635.8.55.001
(data cubes for each state/territory – issued quarterly)

Tourist Accommodation, Australia, Expanded Scope Collection cat. no.
8635.0.55.001 (irregular)

Short-term Visitor Arrivals Estimates, Australia cat. no. 3401.0.55.001 (issued
monthly)

Overseas Arrivals and Departures, Australia cat. no. 3401.0 (issued monthly)

Australian National Accounts, Tourism Satellite Account cat. no. 5249.0 (annual)

Directory of Tourism Statistics, 2001 cat. no. 1130.0 (irregular)

23 Current publications and other products released by the ABS are listed in the *Catalogue of Publications and Products* (cat. no. 1101.0). The catalogue is available from any ABS office or the ABS web site <www.abs.gov.au>. The ABS also issues a daily Release Advice on the web site which details products to be released in the week ahead.

ABS DATA AVAILABLE ON REQUEST

24 As well as the statistics included in this publication, the ABS has other relevant data available on request. Inquiries should be made to the National Information and Referral Service on 1300 135 070.

GLOSSARY

Average length of stay	Average number of days each guest stayed during the reference period. It is a derived item calculated by dividing the number of guest nights by the number of guest arrivals with the result expressed as a number of days.
Average takings per available room night	The takings from accommodation divided by the total number of room nights for the survey period, $\text{Average takings per available room night}(\$) = \frac{\text{Takings from accommodation}}{\text{Room nights available}}$
Average takings per room night occupied	The takings from accommodation divided by the total number of room nights occupied for the survey period, $\text{Average takings per room night occupied}(\$) = \frac{\text{Takings from accommodation}}{\text{Room nights occupied}}$
Bed occupancy rate	The bed occupancy rate represents bed occupancy expressed as a percentage of total capacity available during the survey period, $\text{Bed occupancy rate} (\%) = \frac{\text{Guest nights occupied}}{\text{Guest nights available}} * 100$
Bed spaces	The maximum number of bed spaces normally in place available to accommodate paying guests during the survey period. Three-quarter beds are counted as one bed space; double beds as two bed spaces. Cots and divans not normally used as beds are excluded.
Capacity	Capacity in terms of guest rooms/units is the maximum number available to accommodate paying guests during the survey period. Capacity closed temporarily for seasonal reasons is included.
Establishments	The number of hotels, motels and guest houses and serviced apartments within the scope of the survey which operated for any part of the survey period, or which closed temporarily for the quarter for seasonal reasons.
Guest arrivals	The total number of paying guests counted only on the first night they stayed at the accommodation establishment during the survey period.
Guest nights available	The total number of nights available to all paying guests during the survey period. This is derived from the number of bed spaces multiplied by the number of days for which they were available during the survey period. For establishments closing (other than for seasonal reasons) or opening during this period, operating periods only are included.
Guest nights occupied	The total number of paying guests counted on each night they stayed at the accommodation establishment during the survey period.
Occupancy	Occupancy in terms of room nights occupied refers to the total number of nights each guest room was occupied during the survey period. Occupancy in terms of guest nights refers to the total number of paying guests counted on each night they stayed at the accommodation establishment during the survey period.
Persons employed	The total number of persons working at each accommodation establishment at the end of the survey period (including working proprietors and those working on other than accommodation activities).
Room nights available	The number of guest rooms/units available multiplied by the number of days for which they were available during the survey period. For establishments closing (other than for seasonal reasons) or opening during this period, operating periods only are included.
Room nights occupied	The number of nights each guest room/unit was occupied by a paying guest during the survey period.
Room occupancy rate	The room occupancy rate represents room occupancy expressed as a percentage of total capacity available during the survey period, $\text{Room occupancy rate} (\%) = \frac{\text{Room nights occupied}}{\text{Room nights available}} * 100$

GLOSSARY *continued*

Room occupancy rate <i>continued</i>	providing that, for establishments closing (other than for seasonal reasons) or opening during the survey period, the denominator of the above expression includes only operating periods.
Rooms	The maximum number of rooms available at each establishment during the survey period for accommodating short-term paying guests. Units and apartments within serviced apartments are treated as rooms in these survey results.
Star grading	<p>The grading of hotels, motels and guest houses with facilities and serviced apartments is based on the classification system owned by AAA Tourism Pty Ltd. The gradings are allocated according to a points system based on the amenities and facilities available to guests. Details of the grading scheme are contained in the publication <i>Accommodation Guide</i> published by AAA Tourism Pty Ltd for each of the individual Australian Motoring Organisations. For the purpose of classifying establishments to a star grading in this publication, 'half' star gradings are ignored (e.g. a two and a half star grading has been shown as two star).</p> <p>While coverage has significantly improved, some establishments (including some competing in the 4 and 5 star markets and having significant takings) still remain outside the star grading scheme. These establishments have been given a star grading of 'ungraded'.</p>
Takings from accommodation	<p>Since 1 July 2000, takings from accommodation include gross revenue from the provision of accommodation, including GST. Takings from meals are excluded. In cases where takings from accommodation data cannot be provided inclusive of GST the amount of GST payable is estimated and the data revised accordingly.</p> <p>Takings from accommodation for each month generally represent the takings received during that month. Where payments are received in advance of, or after the provision of accommodation to guests, the monthly figure for takings from accommodation may not necessarily bear a direct relationship to the number of guests accommodated during the month.</p>

FOR MORE INFORMATION . . .

- INTERNET* **www.abs.gov.au** the ABS web site is the best place to start for access to summary data from our latest publications, information about the ABS, advice about upcoming releases, our catalogue, and Australia Now—a statistical profile.
- LIBRARY* A range of ABS publications is available from public and tertiary libraries Australia-wide. Contact your nearest library to determine whether it has the ABS statistics you require, or visit our web site for a list of libraries.
- CPI INFOLINE* For current and historical Consumer Price Index data, call 1902 981 074 (call cost 77c per minute).
- DIAL-A-STATISTIC* This service now provides only current Consumer Price Index statistics call 1900 986 400 (call cost 77c per minute).

INFORMATION SERVICE

Data already published that can be provided within five minutes will be free of charge. Our information consultants can also help you to access the full range of ABS information—ABS user pays services can be tailored to your needs, time frame and budget. Publications may be purchased. Specialists are on hand to help you with analytical or methodological advice.

- PHONE* 1300 135 070
- EMAIL* client.services@abs.gov.au
- FAX* 1300 135 211
- POST* Client Services, ABS, GPO Box 796, Sydney NSW 2001

WHY NOT SUBSCRIBE?

ABS subscription services provide regular, convenient and prompt deliveries of selected ABS publications and products as they are released. Email delivery of monthly and quarterly publications is available.

- PHONE* 1300 366 323
- EMAIL* subscriptions@abs.gov.au
- FAX* (03) 9615 7848
- POST* Subscription Services, ABS, GPO Box 2796Y, Melbourne Vic 3001



2863500009045

ISSN 1031 0770

RRP \$23.00